



Andes
GLOBAL TRADING
 QUALITY | INTEGRITY | TRUST



**SOUTH FLORIDA
 BUSINESS JOURNAL**



**Top 50 Private Companies Fastest Growing
 Private Companies 2016 & 2017**

Entrepreneurial awards



NEWSLETTER

January 8, 2018

Summary	1
Pork Statistics	2
Pork Price Forecasts	3-7
Beef Statistics	8
Beef Price Forecasts	9-12
Chicken Statistics	13-14
Chicken Forecasts	15-17
Turkey Statistics	18
Turkey Forecasts	19-20
Exports	21-24
Statistics for South America	25-27
Global Pork Prices	28

Hogs / Pork

- Hog slaughter was only 2.1 million head last week due to short holiday week and weather disruptions
- Seasonally ham prices are low in late December and early January as Christmas buying comes to an end
- CME hog futures continue to be well supported as higher processing capacity means more competition for hogs
- Ham prices should be higher in February, with processors and exporters securing Easter needs
- Bacon are retail continue to decline, which should support belly demand in late January/early February
- Pork exports in November surpassed 180k MT, 3.8% higher than a year ago and a new all time record

Broiler / Chicken

- The broiler type hatching flock on December 1 was 56.6 million head, 4.8% higher than last year
- Whole broiler prices normally increase in the first week of January as retailers refill the pipeline
- Prices for broiler parts continue to be under pressure due to increasing supplies but they remain above year ago levels
- Chicken exports in November were modestly higher than a year ago, mostly due to a sharp increase in exports to Cuba
- US chicken exports to Cuba in November were up 150% compared to last year while exports to Mexico, the top market for US chicken, were down 2% y/y.

Cattle / Beef

- Retail demand for ground beef and end cuts improves in early January as grocery stores empty the meat case of holiday items and stock less expensive beef offerings
- Cold weather across the US should be good for beef retail demand but negative for foodservice.
- CME fed cattle futures declined sharply on Friday as traders were expecting packers to pay higher prices than the previous week. Instead prices were lower
- In the last 10 years prices in the first half of January increase compared to late December but then often decline in late January/early February on weaker demand
- US exports of fresh/frozen and cooked beef in November were 87,120 MT, 3.3% higher than a year ago

Turkey / Other Poultry

- Seasonally the price of whole turkeys finds a bottom in January and then trends higher
- The spot market for turkey meat remains well supplied and prices remain weak
- Producers struggled with margins in 2017 and there is a renewed push to contract a larger supply of turkeys for 2018.
- Current expectation is for prices to find some support in the spring as spot supplies tighten up
- Turkey exports in November were up 11.8% but still below the five year average
- Turkey poult placements continue to trend lower, down 1% in November compared to year ago levels

Pork Market - Supply Situation & Outlook

Weekly Pork Production Statistics

Source: USDA

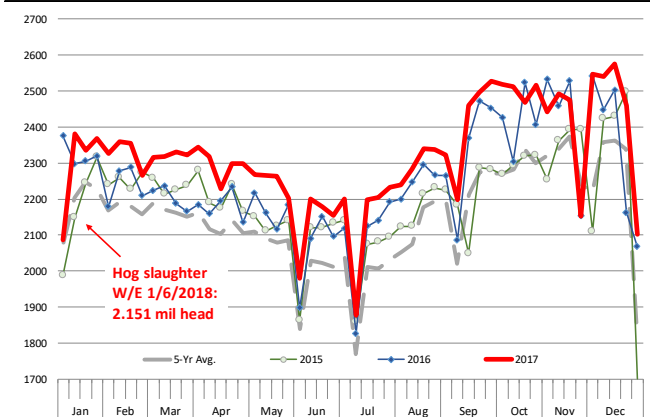
		Slaughter (1000 hd)	% CH.	Dressed Wt LBS	% CH.	Production (Million lbs)	% CH.
Year Ago	7-Jan-17	2,087		213.0		445.3	
This Week	6-Jan-18	2,151	3.1%	214.0	0.5%	459.8	3.3%
Last Week	30-Dec-17	2,102		215.0		450.6	
This Week	6-Jan-18	2,151	2.3%	214.0	-0.5%	459.8	2.0%
YTD Last Year	7-Jan-17	2,087		213.0		445	
YTD This Year	6-Jan-18	2,151	3.1%	214.0	0.5%	460	3.3%

Quarterly History + Forecasts

Q1 2016	29,262		212.9		6,230	
Q2 2016	28,116		212.1		5,963	
Q3 2016	29,323		208.0		6,100	
Q4 2016	31,539		210.8		6,648	
Annual	118,240	Y/Y % CH.	211.0	Y/Y % CH.	24,941	Y/Y % CH.
Q1 2017	30,176	3.1%	212.4	-0.2%	6,409	2.9%
Q2 2017	29,163	3.7%	210.4	-0.8%	6,137	2.9%
Q3 2017	29,962	2.2%	207.0	-0.5%	6,239	2.3%
Q4 2017	32,422	2.8%	212.0	0.6%	6,873	3.4%
Annual	121,723	2.9%	210.5	-0.2%	25,659	2.9%
Q1 2018	30,810	2.1%	213.5	0.5%	6,578	2.6%
Q2 2018	29,746	2.0%	211.5	0.5%	6,291	2.5%
Q3 2018	30,621	2.2%	208.0	0.5%	6,369	2.1%
Q4 2018	33,621	3.7%	212.5	0.2%	7,145	3.9%
Annual	124,799	2.5%	211.4	0.4%	26,383	2.8%

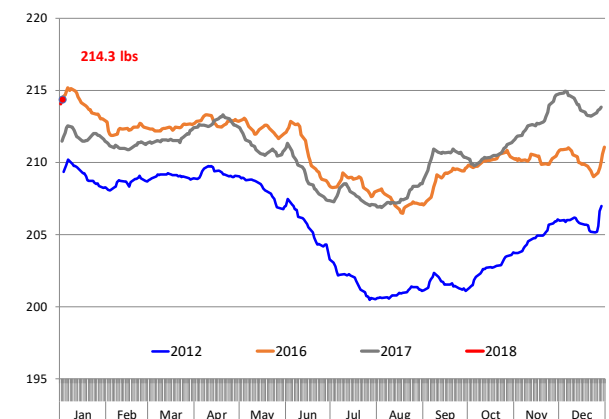
WEEKLY HOG SLAUGHTER, '000 HEAD

Source: USDA

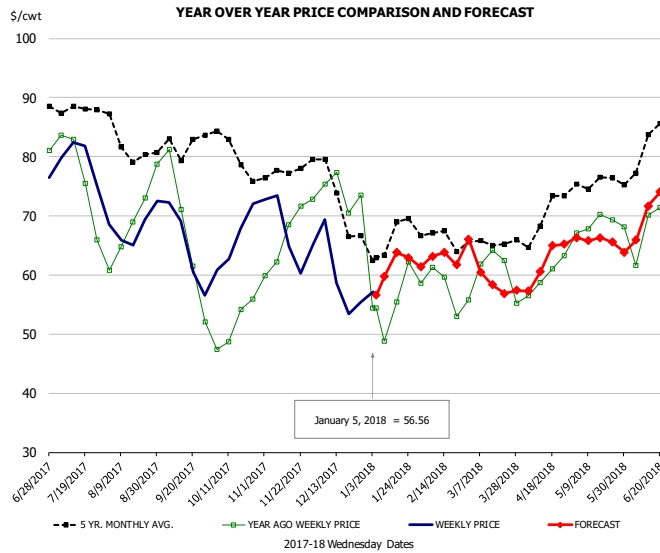


Barrow/Gilt Dressed Carcass Weights, 5-day Moving Avg. - All hogs

Based on Daily MPR Report, LM_HG201. Data through Jan 3, 2018



Ham, 23-27# Trmd Selected Ham, FOB Plant, USDA

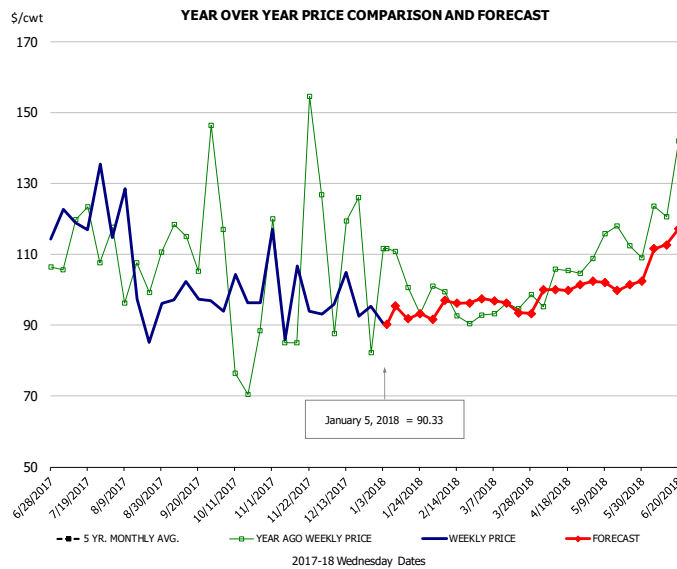


PRICE HISTORY AND FORECAST

- DOLLARS PER CWT -

	5-YR. AVG	YR. AGO	CURRENT	FORECAST	% CH.
Jul	87.20	74.86	78.59		5.0%
Aug	82.85	67.08	67.33		0.4%
Sep	79.59	63.56	63.74		0.3%
Oct	78.47	50.47	66.19		31.2%
Nov	77.11	67.02	66.48		-0.8%
Dec	72.70	72.33	59.78		-17.3%
27-Dec		73.49	55.36		-24.7%
5-Jan		54.35	56.56		4.1%
17-Jan		55.40		63.82	15.2%
Jan	64.72	54.21		61.00	12.5%
Feb	66.71	57.82		63.00	9.0%
Mar	64.82	60.05		59.00	-1.8%
Apr	68.51	59.06		62.00	5.0%
May	75.03	67.94		66.00	-2.9%
Jun	78.69	66.60		70.00	5.1%

Ham, Inner Shank, FOB Plant, USDA

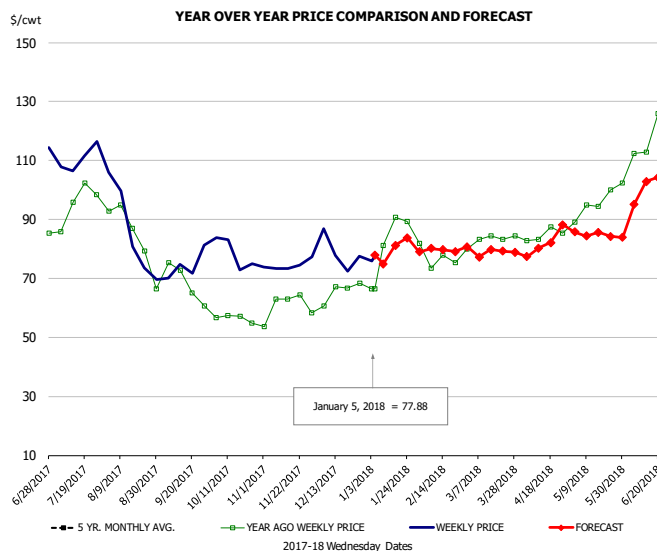


PRICE HISTORY AND FORECAST

- DOLLARS PER CWT -

	5-YR. AVG	YR. AGO	CURRENT	FORECAST	% CH.
Jul		116.42	120.57		3.6%
Aug		101.34	99.62		-1.7%
Sep		109.30	99.43		-9.0%
Oct		104.95	98.45		-6.2%
Nov		107.42	95.16		-11.4%
Dec		119.91	96.14		-19.8%
27-Dec		82.15	95.28		16.0%
5-Jan		111.51	90.33		-19.0%
17-Jan		111.51		91.77	-17.7%
Jan	95.39	111.23		93.00	-16.4%
Feb	96.36	97.40		96.00	-1.4%
Mar	97.05	97.32		96.00	-1.4%
Apr	101.46	101.29		99.00	-2.3%
May	107.03	111.79		102.00	-8.8%
Jun	117.48	118.98		114.00	-4.2%

Ham, Outer Shank, FOB Plant, USDA

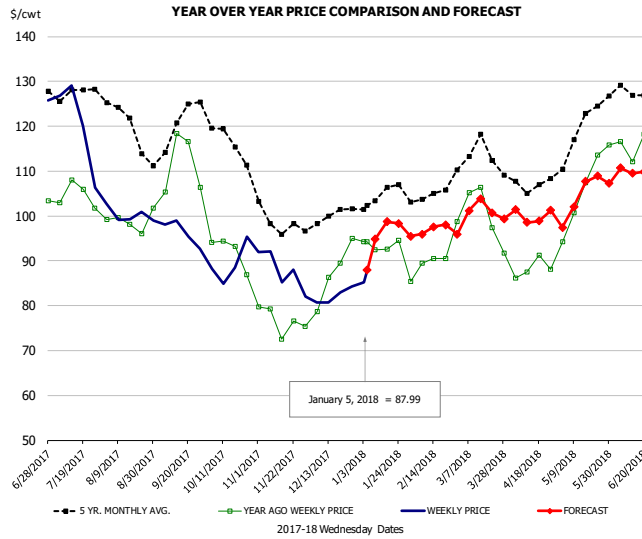


PRICE HISTORY AND FORECAST

- DOLLARS PER CWT -

	5-YR. AVG	YR. AGO	CURRENT	FORECAST	% CH.
Jul		94.36	109.58		16.1%
Aug		85.18	85.98		0.9%
Sep		70.21	71.09		1.2%
Oct		56.74	76.29		34.4%
Nov		60.49	74.72		23.5%
Dec		65.72	76.96		17.1%
27-Dec		68.34	77.52		13.4%
5-Jan		66.52	77.88		17.1%
17-Jan		66.52		81.25	22.1%
Jan	75.25	81.92		78.00	-4.8%
Feb	78.59	76.52		80.00	4.6%
Mar	81.57	82.65		79.00	-4.4%
Apr	87.99	84.27		82.00	-2.7%
May	94.83	95.41		85.00	-10.9%
Jun	109.22	113.11		97.00	-14.2%

Loins, 1/4 Trimmed Loins VAC, FOB Plant, USDA

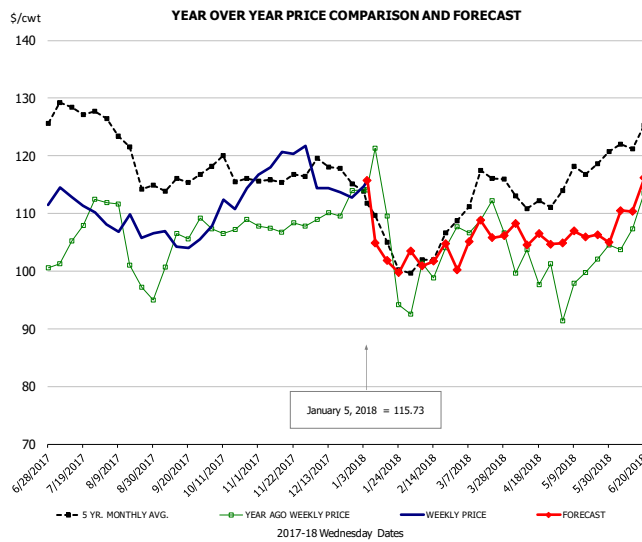


PRICE HISTORY AND FORECAST

- DOLLARS PER CWT -

	5-YR. AVG	YR. AGO	CURRENT	FORECAST	% CH.	
Jul	127.37	104.75	119.37		14.0%	
Aug	119.99	97.92	100.76		2.9%	
Sep	118.05	109.68	95.20		-13.2%	
Oct	115.34	90.51	89.14		-1.5%	
Nov	98.94	77.15	85.71		11.1%	
Dec	99.14	83.33	82.45		-1.1%	
27-Dec		95.07	84.32		-11.3%	
5-Jan		94.31	87.99		-6.7%	
17-Jan		92.55		98.71	6.7%	
Jan	104.04		91.87		4.5%	
Feb	104.45		89.63		8.2%	
Mar	113.06		99.46		101.00	1.5%
Apr	106.48		88.05		100.00	13.6%
May	118.04		104.30		104.00	-0.3%
Jun	126.62		117.69		109.00	-7.4%

Picnic, Picnic Cushion Meat Combo, FOB Plant, USDA

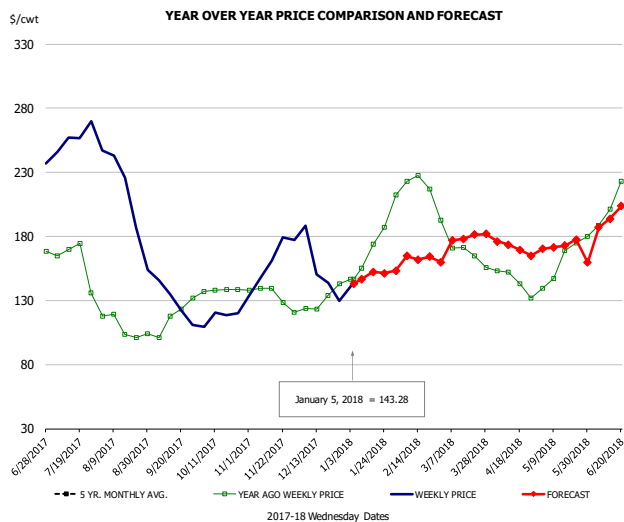


PRICE HISTORY AND FORECAST

- DOLLARS PER CWT -

	5-YR. AVG	YR. AGO	CURRENT	FORECAST	% CH.	
Jul	125.22	106.52	111.71		4.9%	
Aug	120.75	103.31	107.33		3.9%	
Sep	114.75	103.15	104.50		1.3%	
Oct	116.68	106.90	111.66		4.5%	
Nov	116.07	107.32	118.16		10.1%	
Dec	117.16	108.53	114.89		5.9%	
27-Dec		113.97	112.75		-1.1%	
5-Jan		114.05	115.73		1.5%	
17-Jan		109.59		101.83	-7.1%	
Jan	106.41		106.45		105.00	-1.4%
Feb	100.89		98.54		102.00	3.5%
Mar	114.51		105.76		106.00	0.2%
Apr	111.81		99.38		106.00	6.7%
May	115.08		99.50		106.00	6.5%
Jun	122.70		108.28		113.00	4.4%

Belly, Derind Belly 9-13#, FOB Plant, USDA



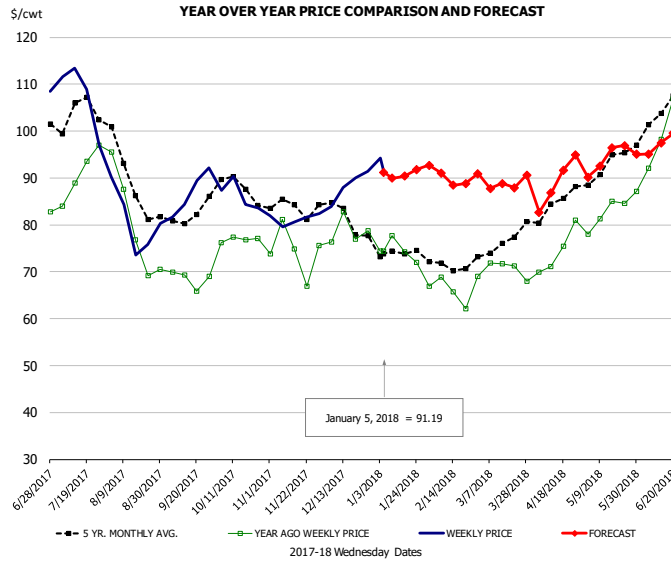
PRICE HISTORY AND FORECAST

- DOLLARS PER CWT -

	5-YR. AVG	YR. AGO	CURRENT	FORECAST	% CH.	
Jul		154.27	256.47		66.2%	
Aug		108.00	193.19		78.9%	
Sep		114.69	135.34		18.0%	
Oct		137.54	117.03		-14.9%	
Nov		129.52	161.13		24.4%	
Dec		126.12	144.34		14.4%	
27-Dec		142.83	129.80		-9.1%	
5-Jan		146.79	143.28		-2.4%	
17-Jan		173.89		152.42	-12.3%	
Jan	151.62		174.85		148.00	-15.4%
Feb	162.69		216.78		165.64	-23.6%
Mar	160.97		168.90		178.00	5.4%
Apr	152.30		143.77		171.00	18.9%
May	150.96		160.70		173.00	7.7%
Jun	181.63		219.23		194.00	-11.5%



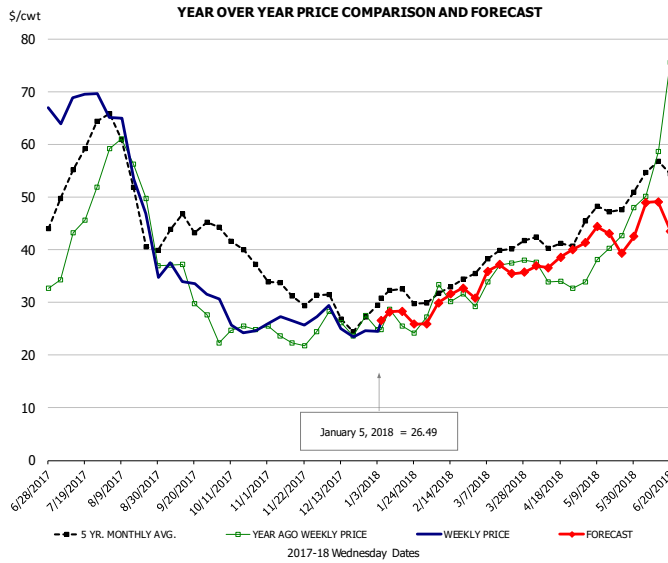
Trim, Picnic Meat Combo Cushion Out, FOB Plant, USDA



PRICE HISTORY AND FORECAST
- DOLLARS PER CWT -

	5-YR. AVG	YR. AGO	CURRENT	FORECAST	% CH.
Jul	102.84	90.26	103.80		15.0%
Aug	88.88	80.02	80.15		0.2%
Sep	80.88	68.35	86.68		26.8%
Oct	86.97	77.78	85.45		9.9%
Nov	83.78	74.75	81.12		8.5%
Dec	81.72	77.24	87.11		12.8%
27-Dec		78.69	91.35		16.1%
5-Jan		74.45	91.19		22.5%
17-Jan		74.21		90.39	21.8%
Jan	74.69	74.25		91.00	22.6%
Feb	71.14	65.22		90.00	38.0%
Mar	75.81	71.23		89.00	25.0%
Apr	83.31	74.81		89.00	19.0%
May	91.44	82.92		94.00	13.4%
Jun	101.13	97.01		96.00	-1.0%

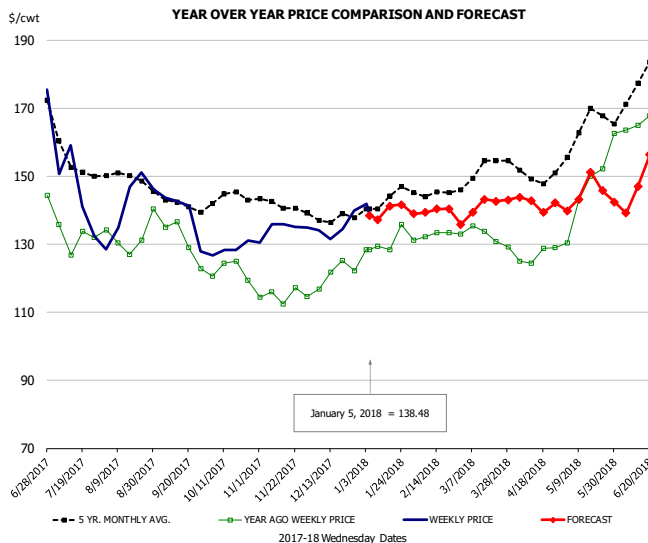
Trim, 42% Trim Combo, FOB Plant, USDA



PRICE HISTORY AND FORECAST
- DOLLARS PER CWT -

	5-YR. AVG	YR. AGO	CURRENT	FORECAST	% CH.
Jul	54.66	42.37	68.68		62.1%
Aug	49.58	49.02	49.73		1.5%
Sep	42.99	32.05	33.37		4.1%
Oct	39.77	24.14	25.89		7.3%
Nov	31.35	23.33	27.04		15.9%
Dec	27.84	25.33	25.34		0.0%
27-Dec		27.54	24.68		-10.4%
5-Jan		24.76	26.49		7.0%
17-Jan		25.44		28.29	11.2%
Jan	30.71	25.27		27.00	6.8%
Feb	32.11	30.64		31.00	1.2%
Mar	38.65	35.08		36.00	2.6%
Apr	41.05	34.21		38.00	11.1%
May	46.23	38.73		42.00	8.5%
Jun	53.15	62.20		45.00	-27.7%

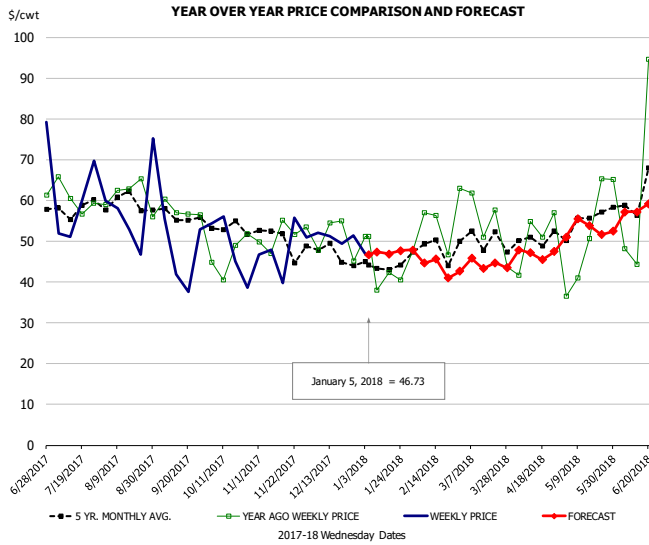
Sparerib, Trmd Sparerib - MED, FOB Plant, USDA



PRICE HISTORY AND FORECAST
- DOLLARS PER CWT -

	5-YR. AVG	YR. AGO	CURRENT	FORECAST	% CH.
Jul	155.64	131.10	139.03		6.0%
Aug	147.98	130.77	142.61		9.0%
Sep	141.10	129.05	133.22		3.2%
Oct	142.22	120.54	128.54		6.6%
Nov	140.71	114.64	134.77		17.6%
Dec	137.35	118.82	134.64		13.3%
27-Dec		122.24	139.86		14.4%
5-Jan		128.37	138.48		7.9%
17-Jan		128.37		141.22	10.0%
Jan	142.07	128.17		139.00	8.4%
Feb	145.15	132.30		140.00	5.8%
Mar	150.48	131.43		141.00	7.3%
Apr	149.52	127.02		142.00	11.8%
May	162.22	145.15		145.00	-0.1%
Jun	169.79	161.18		145.00	-10.0%

Jowl, Skinned Combo, FOB Plant, USDA

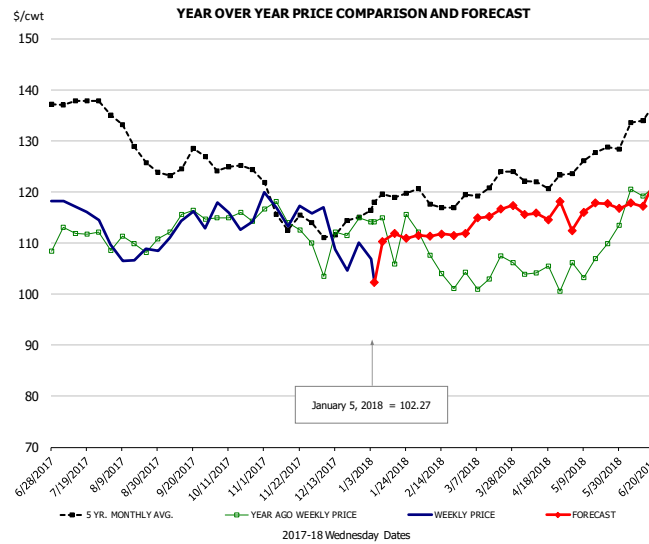


PRICE HISTORY AND FORECAST

- DOLLARS PER CWT -

	5-YR. AVG	YR. AGO	CURRENT	FORECAST	% CH.
Jul	56.77	56.36	58.90		4.5%
Aug	60.22	61.16	55.67		-9.0%
Sep	53.83	54.31	48.77		-10.2%
Oct	51.94	45.93	52.81		15.0%
Nov	47.27	45.28	46.87		3.5%
Dec	45.75	49.79	49.78		0.0%
27-Dec		45.13	51.47		14.0%
5-Jan		51.17	46.73		-8.7%
17-Jan		42.37		46.86	10.6%
Jan	44.09	43.22		47.00	8.8%
Feb	45.87	49.42		44.00	-11.0%
Mar	46.83	50.14		44.00	-12.2%
Apr	49.61	51.40		47.00	-8.6%
May	51.94	46.49		53.00	14.0%
Jun	57.23	53.82		57.00	5.9%

Loin, Boneless Sirloin, FOB Plant, USDA

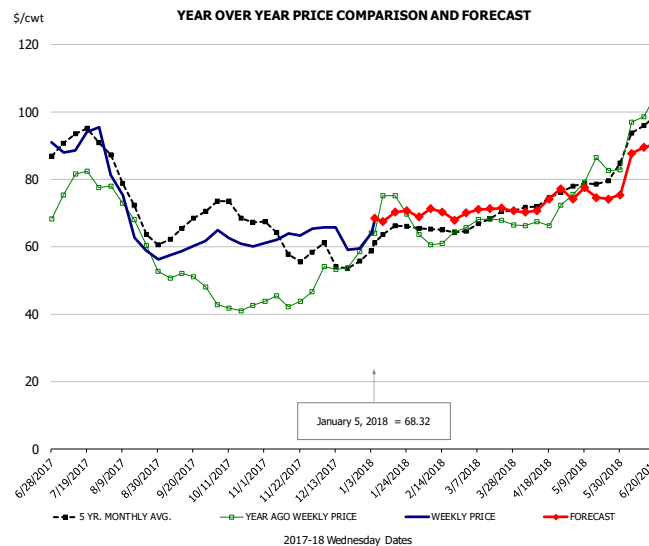


PRICE HISTORY AND FORECAST

- DOLLARS PER CWT -

	5-YR. AVG	YR. AGO	CURRENT	FORECAST	% CH.
Jul	137.74	111.68	115.45		3.4%
Aug	130.22	109.41	107.63		-1.6%
Sep	124.81	113.78	112.96		-0.7%
Oct	124.77	114.01	115.06		0.9%
Nov	114.57	112.40	116.12		3.3%
Dec	112.06	106.93	108.40		1.4%
27-Dec		114.96	110.04		-4.3%
5-Jan		114.11	102.27		-10.4%
17-Jan		105.89		111.82	5.6%
Jan	118.49	111.14		110.00	-1.0%
Feb	118.48	104.86		112.00	6.8%
Mar	121.25	103.21		116.00	12.4%
Apr	121.24	102.18		116.00	13.5%
May	125.62	106.40		116.00	9.0%
Jun	132.48	117.57		118.00	0.4%

Trim, 72% Trim Combo, FOB Plant, USDA

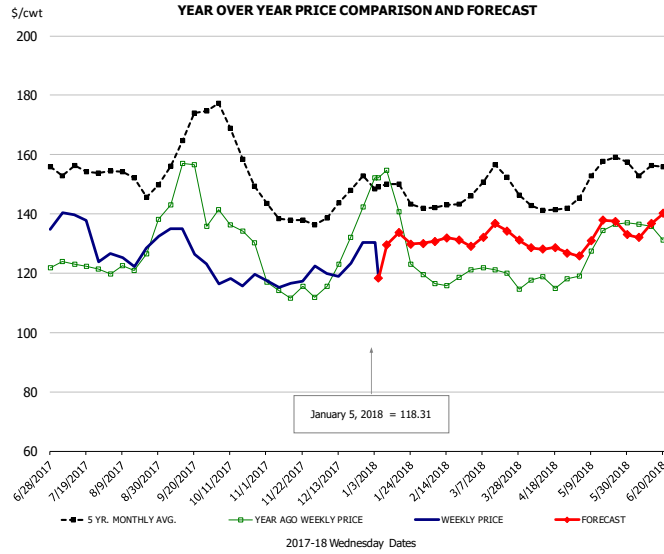


PRICE HISTORY AND FORECAST

- DOLLARS PER CWT -

	5-YR. AVG	YR. AGO	CURRENT	FORECAST	% CH.
Jul	91.10	80.01	90.99		13.7%
Aug	72.41	65.88	66.34		0.7%
Sep	64.16	50.63	59.76		18.0%
Oct	69.72	42.44	62.05		46.2%
Nov	60.49	43.84	62.29		42.1%
Dec	56.25	52.98	63.42		19.7%
27-Dec		58.44	59.39		1.6%
5-Jan		64.03	68.32		6.7%
17-Jan		74.99		70.18	-6.4%
Jan	62.53	69.78		68.00	-2.6%
Feb	64.07	61.56		70.00	13.7%
Mar	67.50	67.74		71.00	4.8%
Apr	72.75	68.32		73.00	6.8%
May	77.24	79.86		75.00	-6.1%
Jun	91.00	93.78		86.00	-8.3%

Loin, Bnls CC Strap-on, FOB Plant, USDA

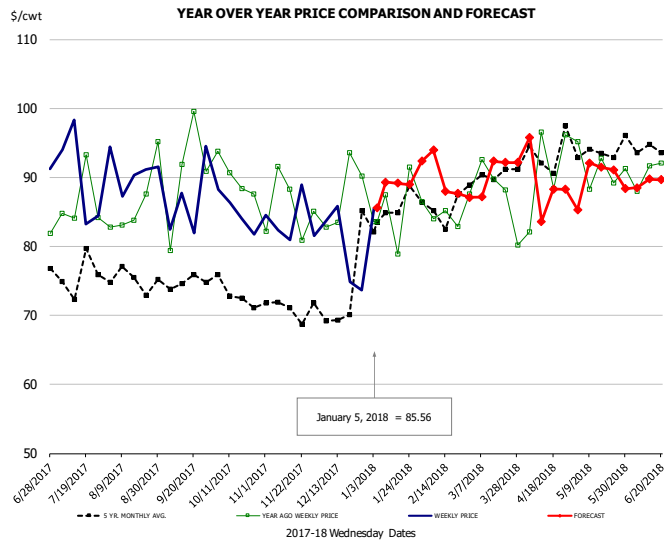


PRICE HISTORY AND FORECAST

- DOLLARS PER CWT -

	5-YR. AVG	YR. AGO	CURRENT	FORECAST	% CH.
Jul	152.25	122.56	132.32		8.0%
Aug	150.71	122.74	126.17		2.8%
Sep	161.98	149.30	127.18		-14.8%
Oct	161.14	132.57	117.34		-11.5%
Nov	138.49	114.24	116.77		2.2%
Dec	142.82	125.52	122.82		-2.1%
27-Dec		142.44	130.37		-8.5%
5-Jan		152.22	118.31		-22.3%
17-Jan		140.77		133.65	-5.1%
Jan	147.05	137.72		131.00	-4.9%
Feb	140.63	115.91		131.00	13.0%
Mar	151.08	119.07		133.00	11.7%
Apr	141.17	116.48		128.00	9.9%
May	151.95	129.76		133.00	2.5%
Jun	152.26	133.31		136.00	2.0%

Brisket Bones, Full, 30#, USDA, FRZ



PRICE HISTORY AND FORECAST

- DOLLARS PER CWT -

	5-YR. AVG	YR. AGO	CURRENT	FORECAST	% CH.
Jul		86.58	90.00		4.0%
Aug		86.48	90.92		5.1%
Sep		90.45	86.65		-4.2%
Oct		90.09	85.06		-5.6%
Nov		85.60	83.65		-2.3%
Dec		87.51	79.51		-9.1%
27-Dec		90.17	73.63		-18.3%
5-Jan		83.61	85.56		2.3%
17-Jan		78.94		89.15	12.9%
Jan		85.60		89.00	4.0%
Feb	85.47	84.90		91.00	7.2%
Mar	89.77	87.66		90.00	2.7%
Apr	93.52	90.82		89.00	-2.0%
May	93.31	91.34		90.00	-1.5%
Jun	94.69	90.74		89.00	-1.9%



Beef Market - Supply Situation & Outlook

Weekly Beef Production Statistics

Source: USDA

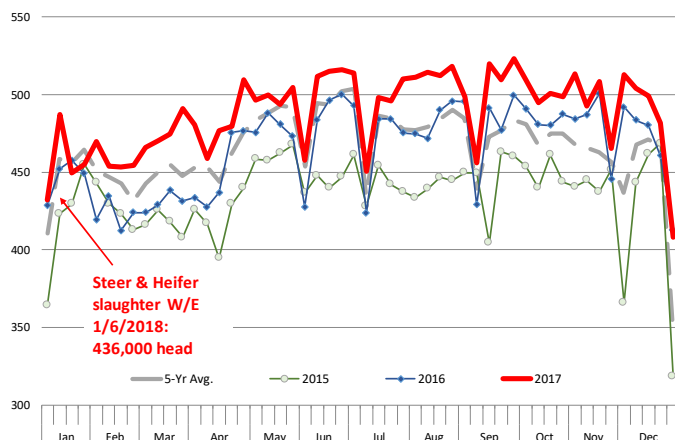
		Slaughter (1000 hd)	% CH.	Dressed Wt LBS	% CH.	Production (Million lbs)	% CH.
Year Ago	7-Jan-17	543.4		837.0		453.7	
This Week	6-Jan-18	541.0	-0.4%	836.0	-0.1%	451.3	-0.5%
Last Week	30-Dec-17	502.0		836.0		418.6	
This Week	6-Jan-18	541.0	7.8%	836.0	0.0%	451.3	7.8%
YTD Last Year	7-Jan-17	543		834.9		454	
YTD This Year	6-Jan-18	541	-0.4%	834.2	-0.1%	451	-0.5%

Quarterly History + Forecasts

Q1 2016	7,184		826.5		5,938	
Q2 2016	7,631		810.9		6,187	
Q3 2016	7,845		824.9		6,472	
Q4 2016	7,919		836.6		6,625	
Annual	30,578	Y/Y % CH.	824.7	Y/Y % CH.	25,221	Y/Y % CH.
Q1 2017	7,711	7.3%	817.0	-1.1%	6,300	6.1%
Q2 2017	8,074	5.8%	793.2	-2.2%	6,404	3.5%
Q3 2017	8,249	5.2%	815.9	-1.1%	6,731	4.0%
Q4 2017	8,228	3.9%	825.0	-1.4%	6,788	2.5%
Annual	32,261	5.5%	812.8	-1.4%	26,222	4.0%
Q1 2018	7,996	3.7%	821.0	0.5%	6,565	4.2%
Q2 2018	8,348	3.4%	805.0	1.5%	6,720	4.9%
Q3 2018	8,513	3.2%	826.0	1.2%	7,032	4.5%
Q4 2018	8,466	2.9%	841.0	1.9%	7,120	4.9%
Annual	33,324	3.3%	823.3	1.3%	27,437	4.6%

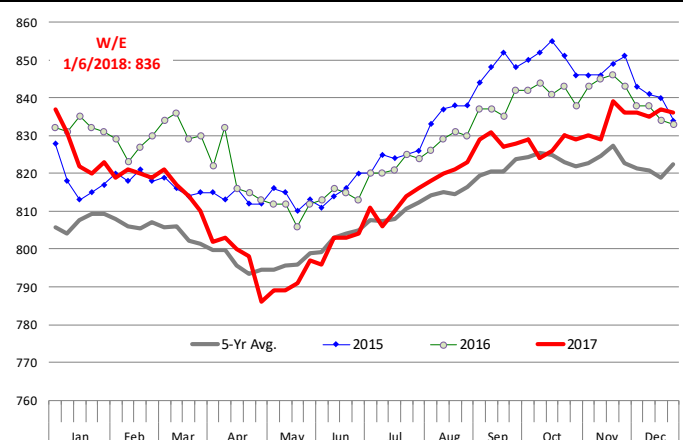
WEEKLY STEER AND HEIFER SLAUGHTER. '000 HEAD

Source: USDA



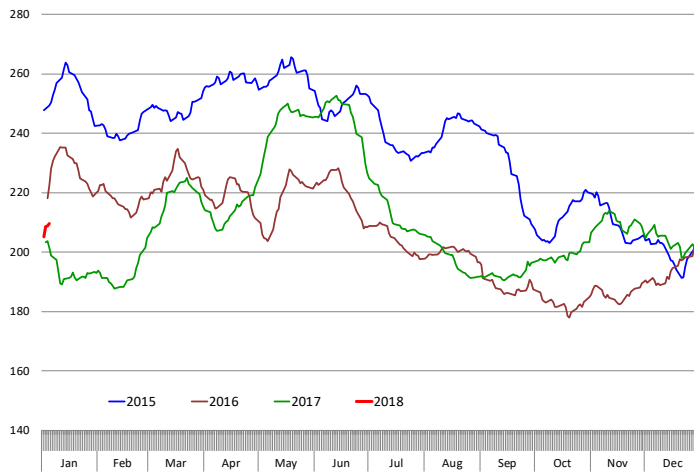
Weekly Average FI Cattle Carcass Weights (Includes Fed & Non Fed Cattle)

Average Dressed Weight Per Carcass. Data Source: USDA AMS

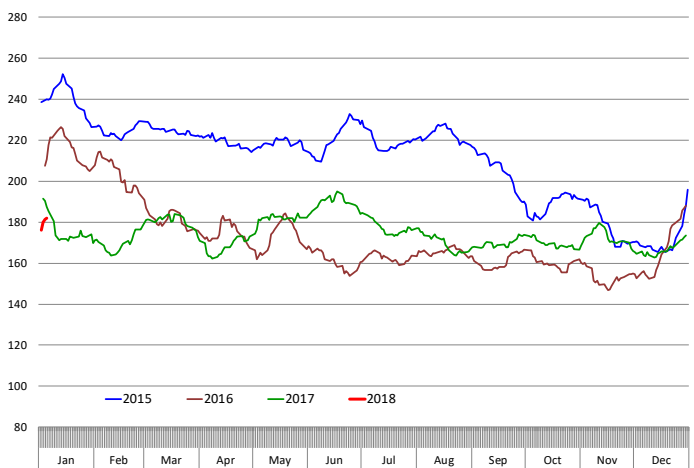


Beef Primal Values

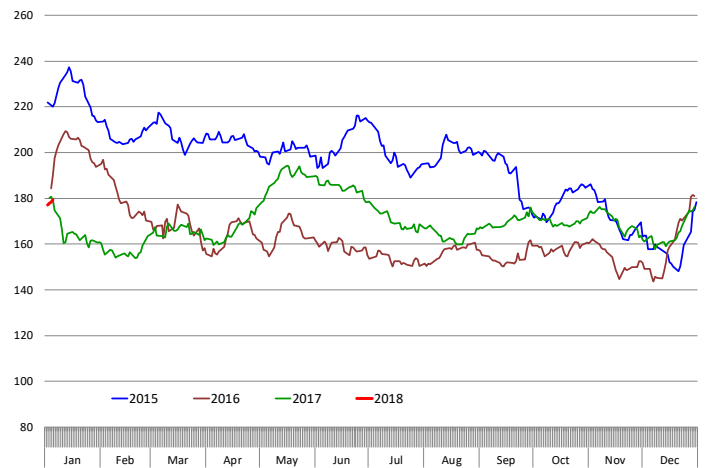
Beef Choice Cutout Value, USDA, Daily, \$/cwt



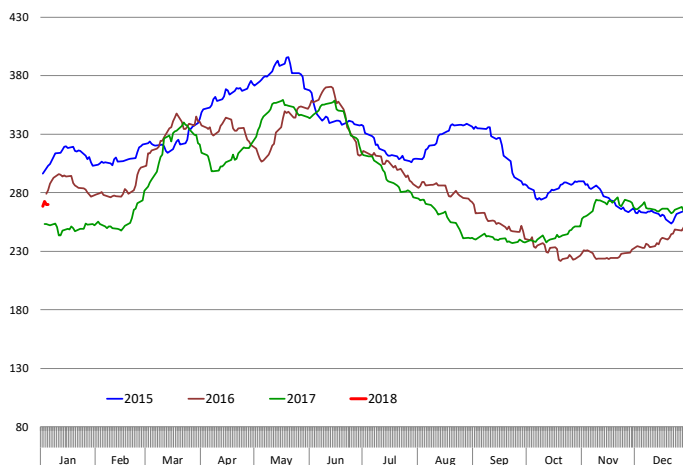
Primal Round Cutout Value, USDA, Daily, \$/cwt



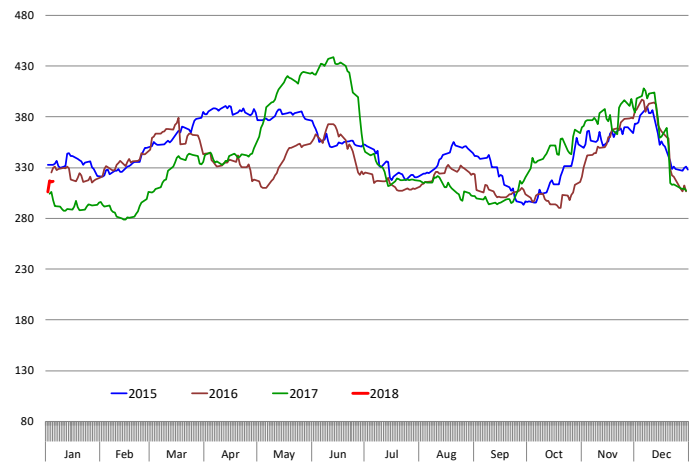
Primal Chuck Cutout Value, USDA, Daily, \$/cwt



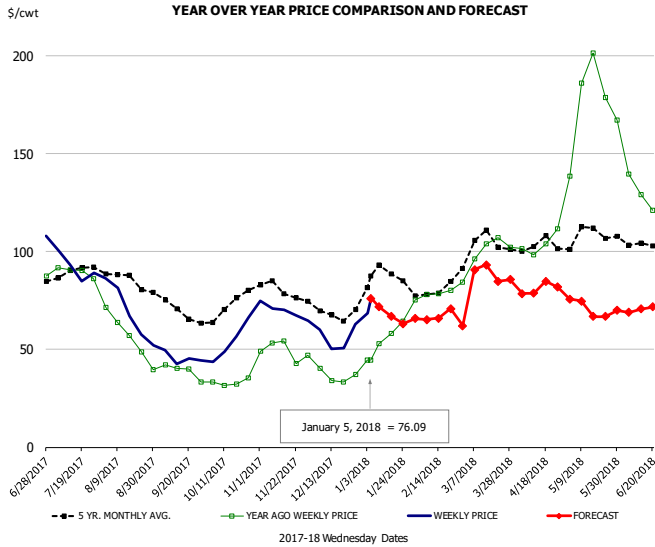
Primal Loin Cutout Value, USDA, Daily, \$/cwt



Primal Rib Cutout Value, USDA, Daily, \$/cwt



50CL BEEF TRIM, FRESH, NATIONAL, USDA

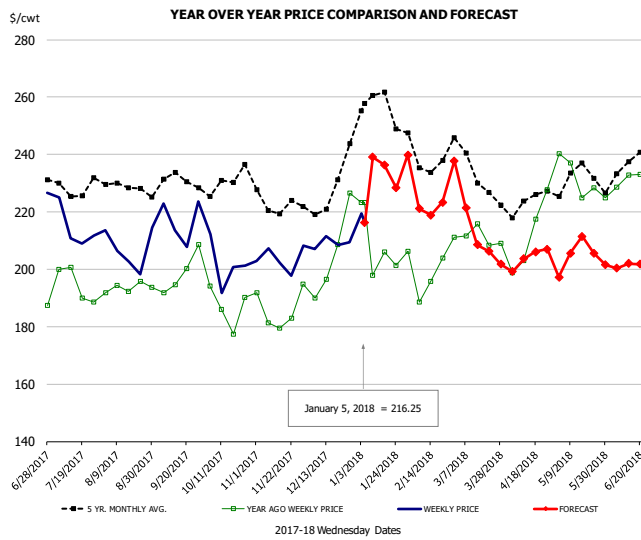


PRICE HISTORY AND FORECAST

- DOLLARS PER CWT -

	5-YR. AVG	YR. AGO	CURRENT	FORECAST	% CH.
Jul	89.06	89.98	92.86		3.2%
Aug	84.66	56.40	68.58		21.6%
Sep	70.05	38.06	45.07		18.4%
Oct	71.22	33.41	56.49		69.1%
Nov	79.69	48.78	69.13		41.7%
Dec	68.52	37.94	54.74		44.3%
27-Dec		37.38	62.80		68.0%
5-Jan		44.61	76.09		70.6%
17-Jan		58.19		66.95	15.1%
Jan	84.83	56.26		67.00	19.1%
Feb	78.59	79.34		67.00	-15.6%
Mar	101.58	98.83		87.00	-12.0%
Apr	102.01	105.46		81.00	-23.2%
May	108.18	176.71		71.00	-59.8%
Jun	103.04	131.93		70.00	-46.9%

SELECT, 114A, 3 SHOULDER CLOD, TRIMMED, 1/4" MAX, USDA

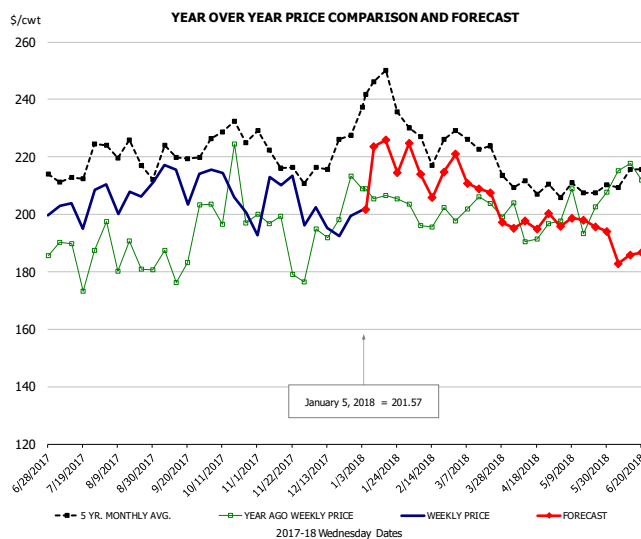


PRICE HISTORY AND FORECAST

- DOLLARS PER CWT -

	5-YR. AVG	YR. AGO	CURRENT	FORECAST	% CH.
Jul	226.68	194.33	210.01		8.1%
Aug	228.05	192.10	205.70		7.1%
Sep	228.50	196.86	214.79		9.1%
Oct	227.15	181.80	201.06		10.6%
Nov	220.68	182.92	203.08		11.0%
Dec	222.58	199.03	207.09		4.0%
27-Dec		226.46	209.45		-7.5%
5-Jan		223.35	216.25		-3.2%
17-Jan		206.04		236.34	14.7%
Jan	253.03	199.89		234.00	17.1%
Feb	237.50	200.26		223.00	11.4%
Mar	231.12	208.65		213.00	2.1%
Apr	221.00	204.47		204.00	-0.2%
May	229.08	228.70		205.00	-10.4%
Jun	230.94	228.26		200.00	-12.4%

SELECT, 170 GOOSENECK ROUND, 18-33, USDA

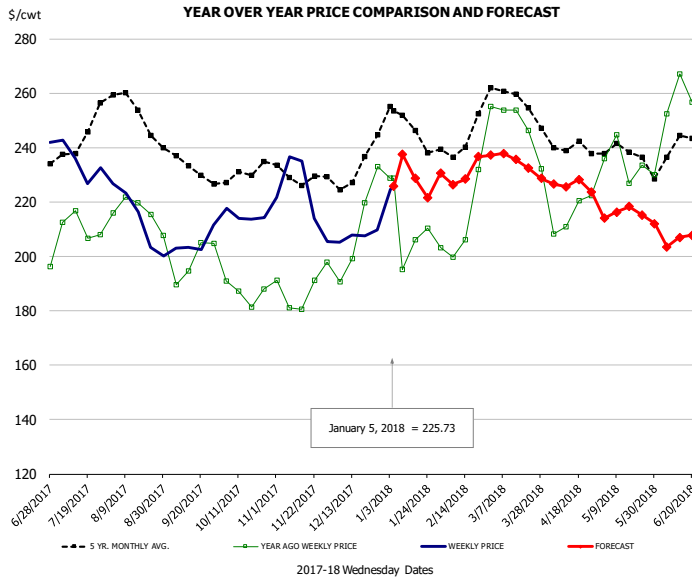


PRICE HISTORY AND FORECAST

- DOLLARS PER CWT -

	5-YR. AVG	YR. AGO	CURRENT	FORECAST	% CH.
Jul	210.31	183.22	195.62		6.8%
Aug	218.27	185.93	198.93		7.0%
Sep	213.89	181.42	204.72		12.8%
Oct	224.02	193.67	204.96		5.8%
Nov	216.55	191.35	197.00		3.0%
Dec	213.67	196.97	196.95		0.0%
27-Dec		213.20	199.55		-6.4%
5-Jan		208.90	201.57		-3.5%
17-Jan		206.57		225.84	9.3%
Jan	235.53	200.42		220.00	9.8%
Feb	221.47	194.76		213.00	9.4%
Mar	218.70	200.86		208.00	3.6%
Apr	206.61	192.05		197.00	2.6%
May	205.76	200.80		197.00	-1.9%
Jun	207.35	206.07		185.00	-10.2%

CHOICE, 168, 3 TOP INSIDE ROUND, 1/4" MAX, USDA

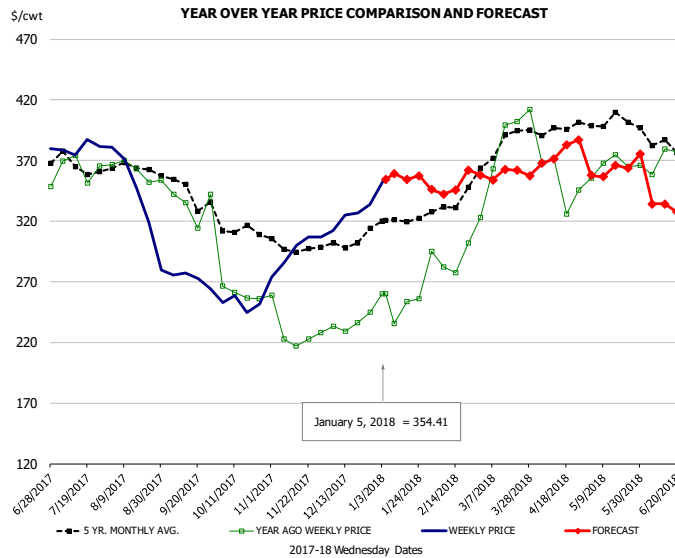


PRICE HISTORY AND FORECAST

- DOLLARS PER CWT -

	5-YR. AVG	YR. AGO	CURRENT	FORECAST	% CH.
Jul	239.92	210.22	232.10		10.4%
Aug	251.27	216.92	210.80		-2.8%
Sep	232.04	197.84	204.34		3.3%
Oct	228.91	188.47	215.92		14.6%
Nov	228.26	184.56	217.04		17.6%
Dec	230.16	202.66	206.45		1.9%
27-Dec		233.12	209.61		-10.1%
5-Jan		228.74	225.73		-1.3%
17-Jan		206.01		228.70	11.0%
Jan	245.80	205.90		232.00	12.7%
Feb	242.05	216.10		230.00	6.4%
Mar	255.24	242.49		235.00	-3.1%
Apr	238.70	214.51		226.00	5.4%
May	236.66	231.79		216.00	-6.8%
Jun	236.13	250.42		206.00	-17.7%

CHOICE, 184, 3 TOP BUTT, BONELESS, USDA

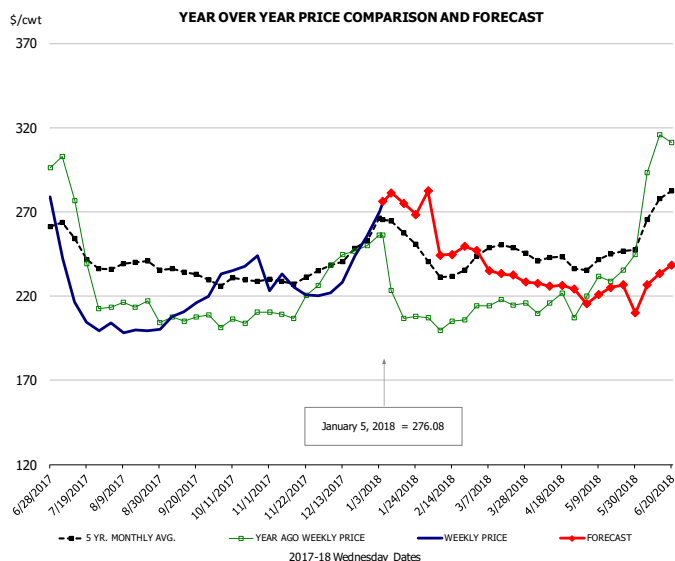


PRICE HISTORY AND FORECAST

- DOLLARS PER CWT -

	5-YR. AVG	YR. AGO	CURRENT	FORECAST	% CH.
Jul	363.90	367.63	378.05		2.8%
Aug	359.92	361.05	333.81		-7.5%
Sep	344.19	327.08	271.78		-16.9%
Oct	310.07	270.49	254.23		-6.0%
Nov	296.97	230.13	294.73		28.1%
Dec	297.06	230.77	320.99		39.1%
27-Dec		244.80	333.72		36.3%
5-Jan		259.78	354.41		36.4%
17-Jan		253.70		354.28	39.6%
Jan	317.78	248.53		354.00	42.4%
Feb	329.27	291.00		341.00	17.2%
Mar	381.86	380.54		356.00	-6.4%
Apr	391.19	358.69		371.00	3.4%
May	399.55	365.43		360.00	-1.5%
Jun	379.60	367.27		330.00	-10.1%

CHOICE, 120, 1 BRISKET, DECKLE-OFF, BONELESS, USDA

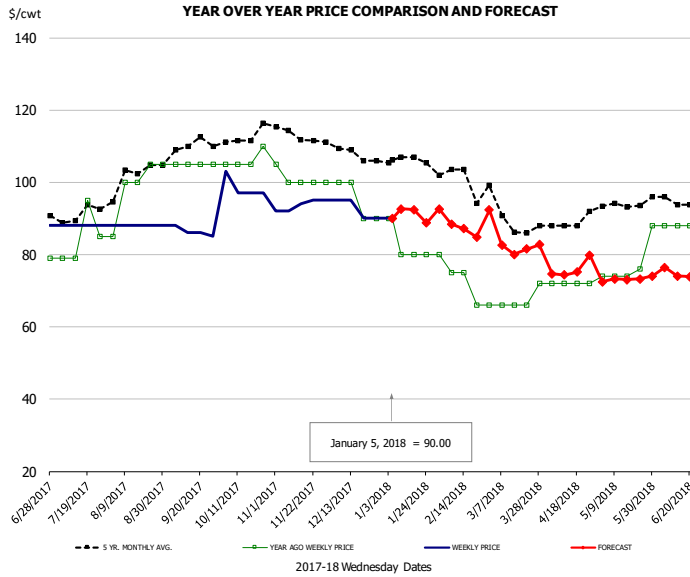


PRICE HISTORY AND FORECAST

- DOLLARS PER CWT -

	5-YR. AVG	YR. AGO	CURRENT	FORECAST	% CH.
Jul	244.22	238.91	210.89		-11.7%
Aug	236.41	209.69	199.86		-4.7%
Sep	233.03	205.51	210.80		2.6%
Oct	227.76	203.84	235.53		15.5%
Nov	227.91	209.71	232.71		6.7%
Dec	240.69	243.10	234.17		-3.7%
27-Dec		250.03	255.44		2.2%
5-Jan		256.06	276.08		7.8%
17-Jan		206.60		274.95	33.1%
Jan	253.95	215.96		276.00	27.8%
Feb	232.37	204.57		248.00	21.2%
Mar	243.58	211.62		232.00	9.6%
Apr	238.91	210.28		226.00	7.5%
May	241.61	232.08		222.00	-4.3%
Jun	267.47	290.22		231.00	-20.4%

UB Beef Tripe, Scalded, Edible

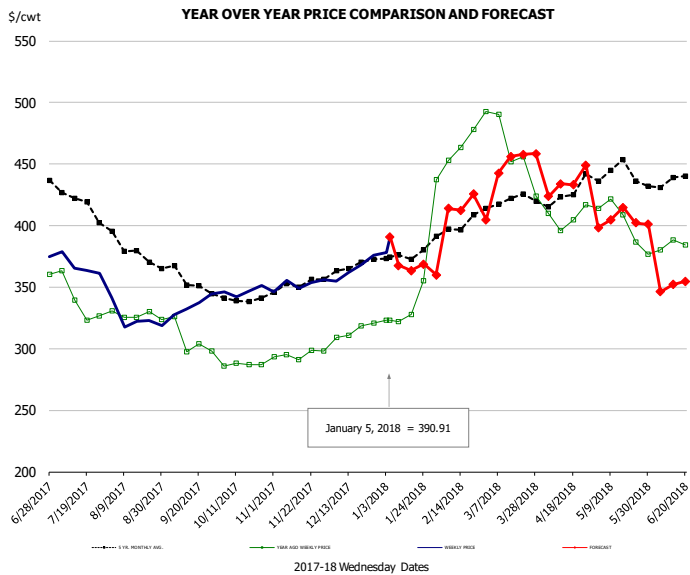


PRICE HISTORY AND FORECAST

- DOLLARS PER CWT -

	5-YR. AVG	YR. AGO	CURRENT	FORECAST	% CH.
Jul	91.15	84.50	88.00		4.1%
Aug	101.60	99.00	88.00		-11.1%
Sep	108.95	105.00	86.25		-17.9%
Oct	112.11	106.25	98.50		-7.3%
Nov	113.25	101.00	93.60		-7.3%
Dec	108.19	95.00	92.50		-2.6%
27-Dec		90.00	90.00		0.0%
5-Jan		90.00	90.00		0.0%
17-Jan		80.00		92.39	15.5%
Jan	106.02	82.50		92.00	11.5%
Feb	100.85	74.00		87.00	17.6%
Mar	90.82	67.20		83.00	23.5%
Apr	88.76	72.00		76.00	5.6%
May	94.17	77.20		73.00	-5.4%
Jun	94.48	88.00		75.00	-14.8%

Inside Skirt, USDA



PRICE HISTORY AND FORECAST

- DOLLARS PER CWT -

	5-YR. AVG	YR. AGO	CURRENT	FORECAST	% CH.
Jul	416.81	336.73	367.65		9.2%
Aug	377.59	326.10	325.53		-0.2%
Sep	352.82	302.95	333.12		10.0%
Oct	340.09	291.46	347.76		19.3%
Nov	348.39	295.12	352.71		19.5%
Dec	362.92	311.40	365.62		17.4%
27-Dec		320.82	375.61		17.1%
5-Jan		322.91	390.91		21.1%
17-Jan		328.12		363.56	10.8%
Jan	374.57	333.45		366.00	9.8%
Feb	395.76	459.40		415.00	-9.7%
Mar	417.87	461.72		451.00	-2.3%
Apr	422.41	408.95		435.00	6.4%
May	434.48	395.52		405.00	2.4%
Jun	432.50	378.23		351.00	-7.2%



Broiler Market - Supply Situation & Outlook

Weekly Broiler Production Statistics

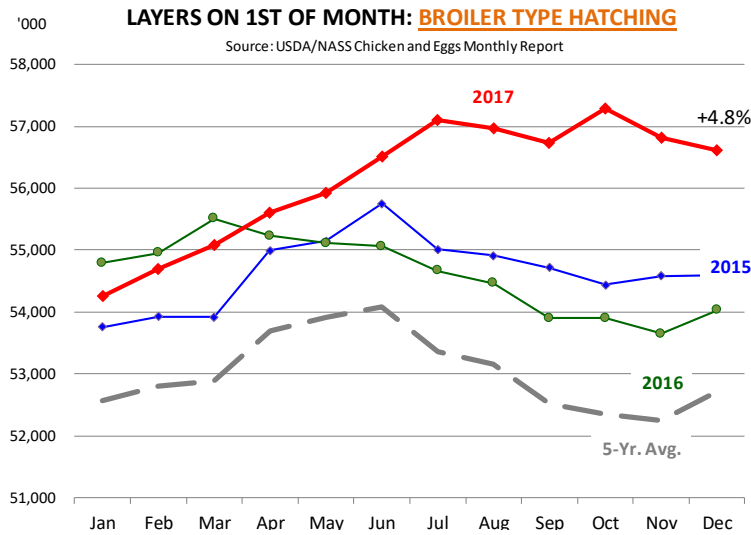
Source: USDA

		Slaughter (million hd)	% CH.	Dressed Wt LBS	% CH.	Production RTC (Million lbs)	% CH.
Year Ago	31-Dec-16	133.0		4.72		627.7	
Last Week	30-Dec-17	137.3	3.2%	4.75	0.6%	652.0	3.9%
Prev. Week	23-Dec-17	160.1		4.68		749.5	
Last Week	30-Dec-17	137.3	-14.3%	4.75	1.5%	652.0	-13.0%
YTD Last Year	31-Dec-16	8,244		4.67		38,518	
YTD This Year	30-Dec-17	8,370	1.5%	4.67	0.0%	39,096	1.5%

Quarterly History + Forecasts

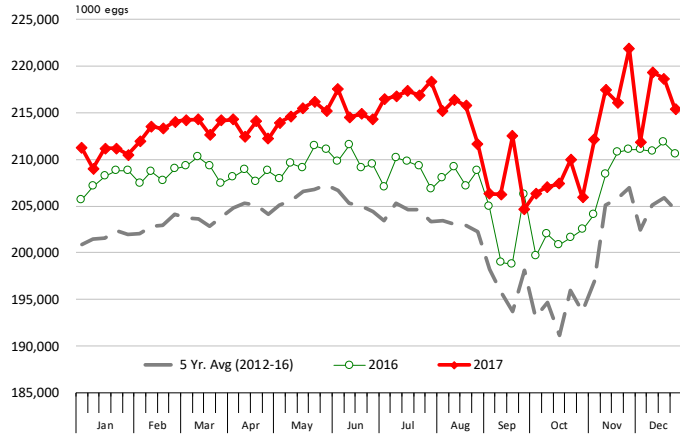
Q1 2016	2,160		4.65		10,039	
Q2 2016	2,207		4.65		10,253	
Q3 2016	2,248		4.60		10,338	
Q4 2016	2,154		4.67		10,065	
Annual	8,768	Y/Y % CH.	4.64	Y/Y % CH.	40,696	Y/Y % CH.
Q1 2017	2,201	1.9%	4.65	0.0%	10,233	1.9%
Q2 2017	2,236	1.3%	4.65	0.2%	10,407	1.5%
Q3 2017	2,264	0.7%	4.66	1.3%	10,542	2.0%
Q4 2017	2,199	2.1%	4.70	0.6%	10,337	2.7%
Annual	8,899	1.5%	4.67	0.5%	41,518	2.0%
Q1 2018	2,242	1.9%	4.67	0.4%	10,472	2.3%
Q2 2018	2,269	1.5%	4.67	0.3%	10,598	1.8%
Q3 2018	2,298	1.5%	4.66	0.1%	10,707	1.6%
Q4 2018	2,228	1.3%	4.72	0.4%	10,516	1.7%
Annual	9,037	1.5%	4.68	0.3%	42,293	1.9%





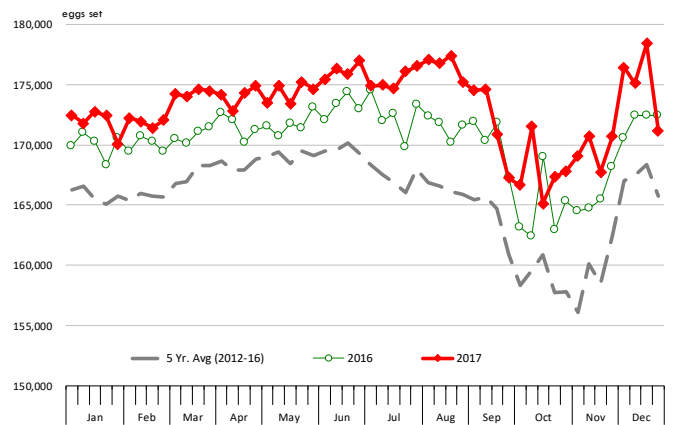
US WEEKLY BROILER EGG SETS, 19 SELECTED STATES

Source: USDA Broiler Hatchery Report

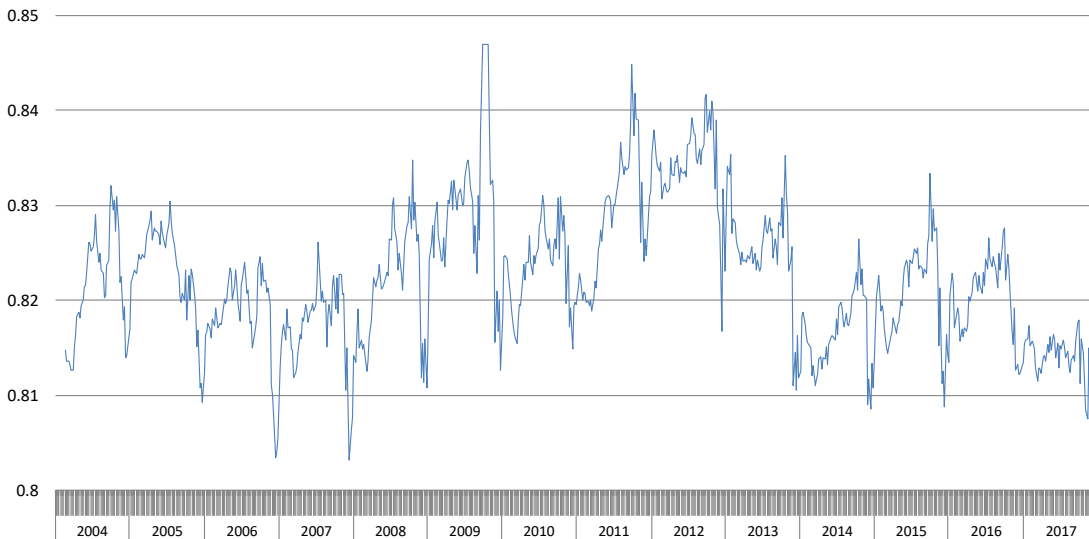


US WEEKLY BROILER CHICK PLACEMENTS, 19 STATES

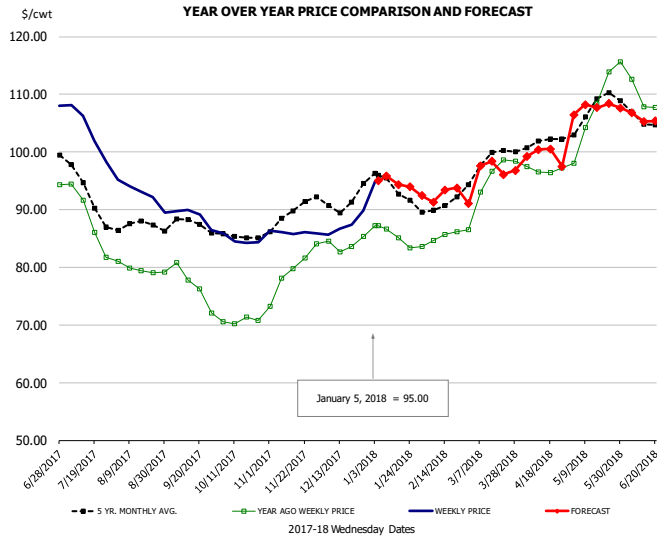
Source: USDA Broiler Hatchery Report



RATIO OF CHICK PLACEMENTS VS. EGG SETS (21 DAY LAG)



BROILER, NATIONAL WHOLE BIRD PRICE, USDA

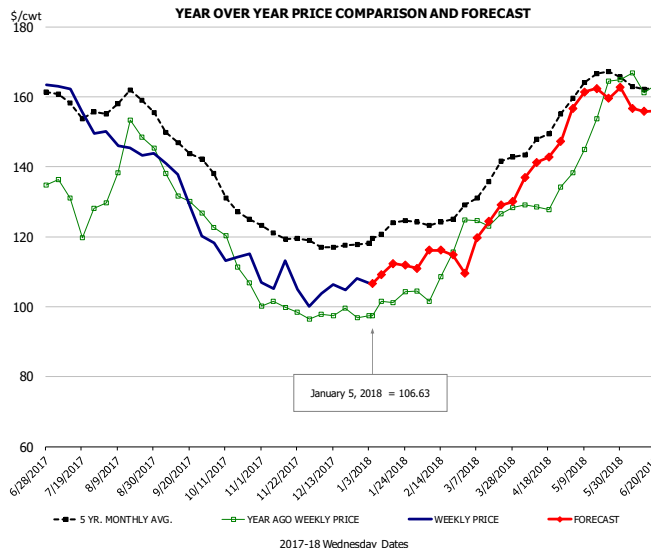


PRICE HISTORY AND FORECAST

- DOLLARS PER CWT -

	5-YR. AVG	YR. AGO	CURRENT	FORECAST	% CH.
Jul	93.72	88.44	103.65		17.2%
Aug	87.15	79.69	92.80		16.5%
Sep	87.07	76.71	88.83		15.8%
Oct	85.41	70.75	84.73		19.8%
Nov	89.18	79.35	86.06		8.5%
Dec	91.29	84.05	87.40		4.0%
27-Dec		85.39	89.80		5.2%
5-Jan		87.16	95.00		9.0%
17-Jan		85.13		94.34	10.8%
Jan	94.17	85.58		95.00	11.0%
Feb	90.60	85.01		92.00	8.2%
Mar	98.32	94.65		97.00	2.5%
Apr	101.48	96.90		100.00	3.2%
May	107.33	108.05		107.00	-1.0%
Jun	105.79	109.03		106.00	-2.8%

N.E. BROILER BREAST BONELESS-SKINLESS, USDA

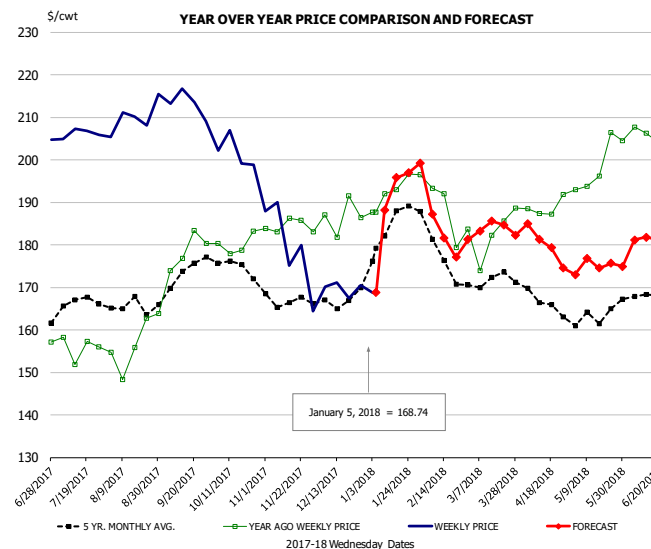


PRICE HISTORY AND FORECAST

- DOLLARS PER CWT -

	5-YR. AVG	YR. AGO	CURRENT	FORECAST	% CH.
Jul	157.70	128.78	157.63		22.4%
Aug	158.15	142.99	145.75		1.9%
Sep	147.47	131.63	131.91		0.2%
Oct	131.98	115.26	115.16		-0.1%
Nov	120.64	99.24	106.01		6.8%
Dec	117.56	97.93	105.72		7.9%
27-Dec		96.82	108.02		11.6%
5-Jan		97.48	106.63		9.4%
17-Jan		101.21		112.38	11.0%
Jan	121.75	101.17		110.00	8.7%
Feb	124.10	107.51		116.00	7.9%
Mar	134.75	125.46		124.00	-1.2%
Apr	146.82	129.87		142.00	9.3%
May	164.34	153.28		160.00	4.4%
Jun	164.02	163.75		158.00	-3.5%

N.E. BROILER WINGS, USDA, WT.AVG.

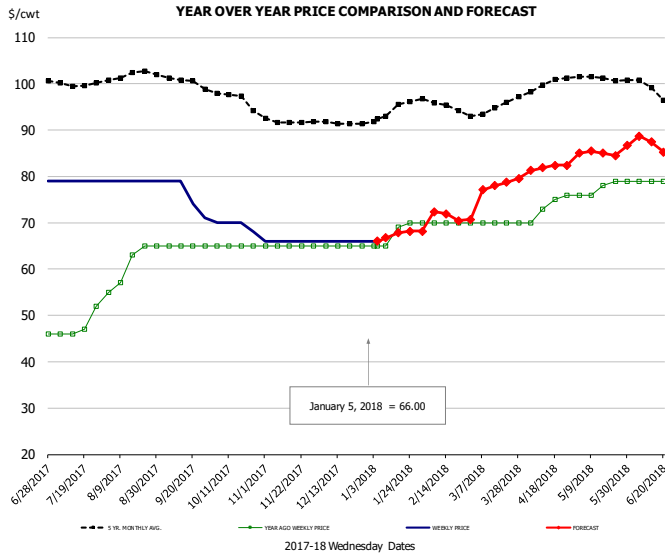


PRICE HISTORY AND FORECAST

- DOLLARS PER CWT -

	5-YR. AVG	YR. AGO	CURRENT	FORECAST	% CH.
Jul	165.60	155.87	206.21		32.3%
Aug	165.58	157.08	210.05		33.7%
Sep	172.43	178.59	213.14		19.3%
Oct	175.17	180.05	201.73		12.0%
Nov	166.86	184.38	179.46		-2.7%
Dec	166.76	186.70	169.80		-9.1%
27-Dec		186.45	170.45		-8.6%
5-Jan		187.76	168.74		-10.1%
17-Jan		193.02		195.78	1.4%
Jan	183.02	192.36		190.00	-1.2%
Feb	179.03	190.28		185.00	-2.8%
Mar	171.89	182.84		183.00	0.1%
Apr	167.69	188.71		180.00	-4.6%
May	163.19	198.74		175.00	-11.9%
Jun	167.98	205.67		181.00	-12.0%

NE BONELESS BROILER WHITE TRIM MEAT, UNDER 15%, FRESH

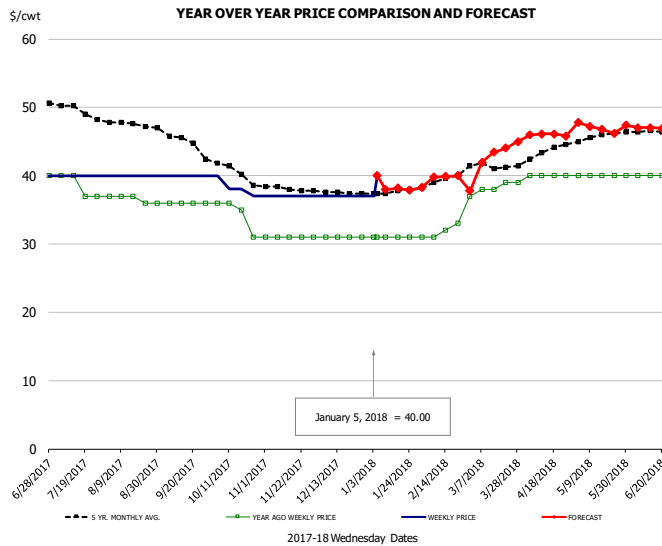


PRICE HISTORY AND FORECAST

- DOLLARS PER CWT -

	5-YR. AVG	YR. AGO	CURRENT	FORECAST	% CH.
Jul	100.07	47.75	79.00		65.4%
Aug	102.00	61.00	79.00		29.5%
Sep	100.92	65.00	75.75		16.5%
Oct	97.02	65.00	69.50		6.9%
Nov	91.85	65.00	66.00		1.5%
Dec	91.56	65.00	66.00		1.5%
27-Dec		65.00	66.00		1.5%
5-Jan		65.00	66.00		1.5%
17-Jan		69.00		67.79	-1.7%
Jan	94.04	67.80		67.00	-1.2%
Feb	95.55	70.00		72.00	2.9%
Mar	94.30	70.00		78.00	11.4%
Apr	99.52	73.50		82.00	11.6%
May	101.18	77.60		85.00	9.5%
Jun	99.30	79.00		87.00	10.1%

UB CHICKEN - NE DRUMSTICKS, (BULK)

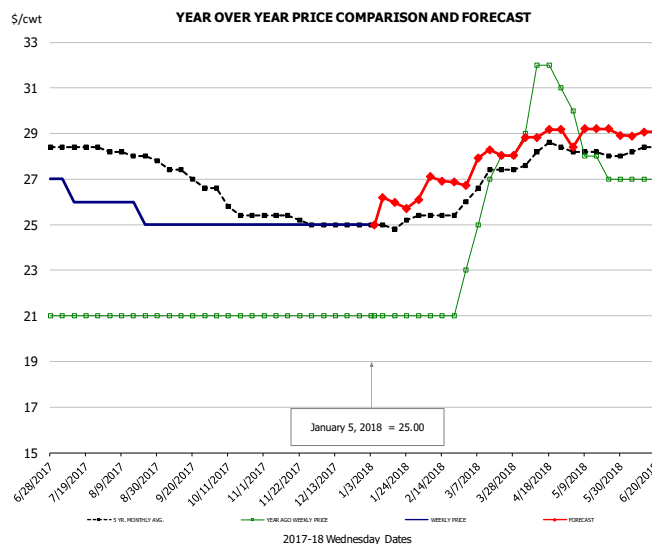


PRICE HISTORY AND FORECAST

- DOLLARS PER CWT -

	5-YR. AVG	YR. AGO	CURRENT	FORECAST	% CH.
Jul	49.66	38.50	40.00		3.9%
Aug	47.57	36.60	40.00		9.3%
Sep	45.65	36.00	40.00		11.1%
Oct	40.82	34.50	38.25		10.9%
Nov	38.15	31.00	37.00		19.4%
Dec	37.56	31.00	37.00		19.4%
27-Dec		31.00	37.00		19.4%
5-Jan		31.00	40.00		29.0%
17-Jan		31.00		38.19	23.2%
Jan	37.63	31.00		38.00	22.6%
Feb	39.20	31.75		40.00	26.0%
Mar	41.43	38.20		43.00	12.6%
Apr	43.28	40.00		46.00	15.0%
May	45.70	40.00		47.00	17.5%
Jun	46.45	40.00		47.00	17.5%

MECHANICALLY SEPARATED CHICKEN-FRESH-15-20% FAT W/SKN

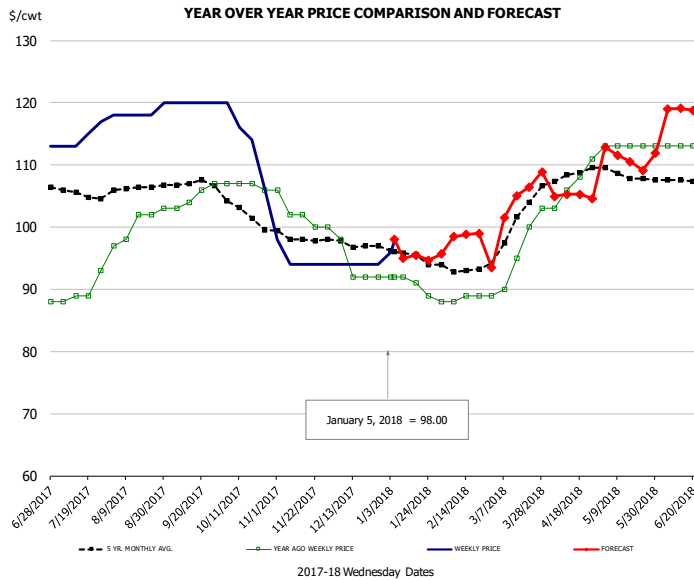


PRICE HISTORY AND FORECAST

- DOLLARS PER CWT -

	5-YR. AVG	YR. AGO	CURRENT	FORECAST	% CH.
Jul	28.40	21.00	26.25		25.0%
Aug	28.12	21.00	25.60		21.9%
Sep	27.37	21.00	25.00		19.0%
Oct	25.93	21.00	25.00		19.0%
Nov	25.35	21.00	25.00		19.0%
Dec	25.00	21.00	25.00		19.0%
27-Dec		21.00	25.00		19.0%
5-Jan		21.00	25.00		19.0%
17-Jan		21.00		25.97	23.7%
Jan	24.98	21.00		26.00	23.8%
Feb	25.40	21.00		27.00	28.6%
Mar	26.91	26.20		28.00	6.9%
Apr	28.10	31.00		29.00	-6.5%
May	28.10	28.00		29.00	3.6%
Jun	28.25	27.00		29.00	7.4%

UB NE Whole Leg Meat 4/10's

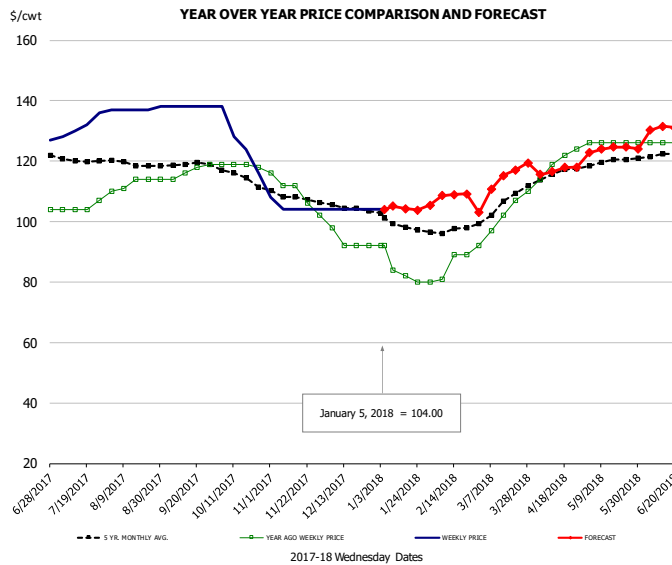


PRICE HISTORY AND FORECAST

- DOLLARS PER CWT -

	5-YR. AVG	YR. AGO	CURRENT	FORECAST	% CH.
Jul	105.53	89.75	114.50		27.6%
Aug	106.14	100.40	118.40		17.9%
Sep	107.09	105.00	120.00		14.3%
Oct	102.78	106.75	114.00		6.8%
Nov	98.20	102.00	94.80		-7.1%
Dec	97.06	93.50	94.00		0.5%
27-Dec		92.00	94.00		2.2%
5-Jan		92.00	98.00		6.5%
17-Jan		91.00		95.47	4.9%
Jan	95.30	90.40		95.00	5.1%
Feb	93.25	88.50		99.00	11.9%
Mar	100.11	95.40		104.00	9.0%
Apr	108.32	107.00		105.00	-1.9%
May	108.45	113.00		111.00	-1.8%
Jun	107.66	113.00		119.00	5.3%

UB NE Boneless/Skinless Thigh Meat, Special Trim

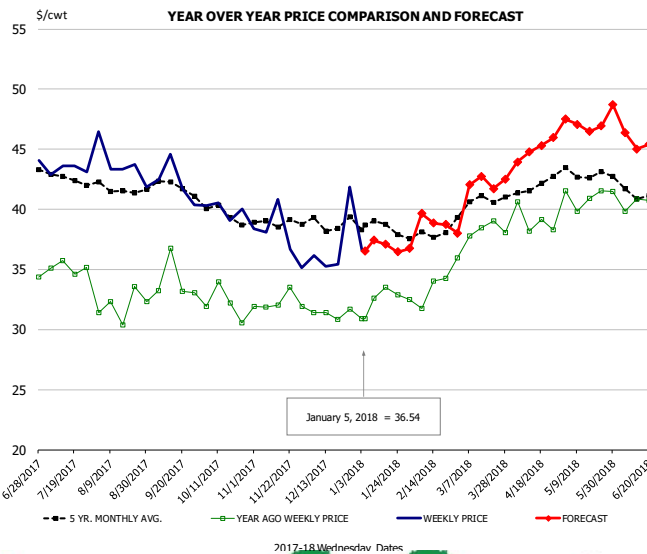


PRICE HISTORY AND FORECAST

- DOLLARS PER CWT -

	5-YR. AVG	YR. AGO	CURRENT	FORECAST	% CH.
Jul	120.55	104.75	131.50		25.5%
Aug	119.27	112.60	137.20		21.8%
Sep	118.99	116.75	138.00		18.2%
Oct	115.34	118.75	126.50		6.5%
Nov	108.07	109.60	104.80		-4.4%
Dec	104.54	93.50	104.00		11.2%
27-Dec		92.00	104.00		13.0%
5-Jan		92.00	104.00		13.0%
17-Jan		82.00		104.25	27.1%
Jan	99.22	83.60		105.00	25.6%
Feb	97.10	84.75		109.00	28.6%
Mar	105.43	101.60		114.00	12.2%
Apr	115.64	119.75		117.00	-2.3%
May	119.45	126.00		124.00	-1.6%
Jun	121.95	126.25		131.00	3.8%

N.E. BROILER LEG QUARTERS, USDA



PRICE HISTORY AND FORECAST

- DOLLARS PER CWT -

	5-YR. AVG	YR. AGO	CURRENT	FORECAST	% CH.
Jul	42.78	35.16	43.31		23.2%
Aug	41.58	32.01	43.75		36.7%
Sep	41.97	34.05	42.28		24.2%
Oct	39.84	32.16	39.99		24.3%
Nov	38.90	32.27	37.83		17.2%
Dec	38.76	31.34	37.17		18.6%
27-Dec		31.67	41.83		32.1%
5-Jan		30.89	36.54		18.3%
17-Jan		33.54		37.08	10.6%
Jan	38.49	32.48		37.00	13.9%
Feb	37.85	33.14		39.00	17.7%
Mar	40.50	37.87		42.00	10.9%
Apr	41.86	39.06		45.00	15.2%
May	43.03	41.08		47.00	14.4%
Jun	41.66	41.38		46.00	11.2%

Turkey Market - Supply Situation & Outlook

Weekly Turkey Production Statistics

Source: USDA

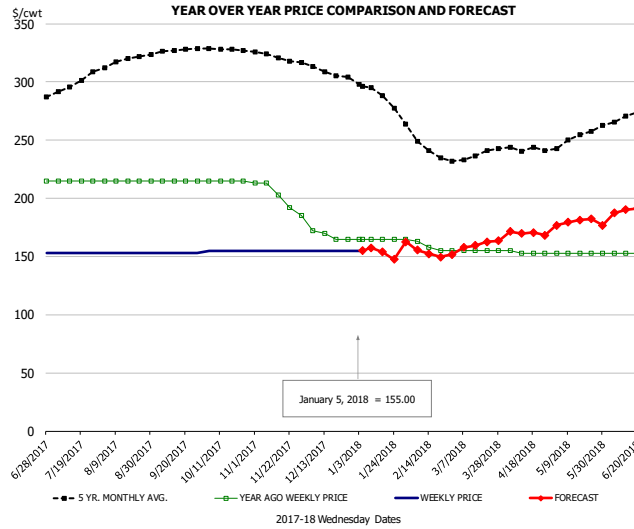
		Slaughter (million hd)	% CH.	Dressed Wt LBS	% CH.	Production RTC (Million lbs)	% CH.
Year Ago	31-Dec-16	2.791		27.92		77.9	
Last Week	30-Dec-17	2.698	-3.3%	26.60	-4.7%	71.8	-7.9%
Prev. Week	23-Dec-17	3.867		25.94		100.3	
Last Week	30-Dec-17	2.698	-30.2%	26.60	2.5%	71.8	-28.5%
YTD Last Year	31-Dec-16	219.9		24.81		5,456	
YTD This Year	30-Dec-17	216.2	-1.7%	25.20	1.6%	5,447	-0.2%

Quarterly History + Forecasts

Q1 2016	57.1		25.12		1,435	
Q2 2016	61.4		24.74		1,520	
Q3 2016	62.4		24.28		1,515	
Q4 2016	62.3		24.26		1,511	
Annual	243.3	Y/Y % CH.	24.60	Y/Y % CH.	5,981	Y/Y % CH.
Q1 2017	58.7	2.8%	25.33	0.8%	1,487	3.6%
Q2 2017	59.6	-3.1%	24.87	0.5%	1,481	-2.5%
Q3 2017	60.4	-3.2%	24.44	0.7%	1,476	-2.6%
Q4 2017	61.0	-2.0%	24.46	0.8%	1,493	-1.2%
Annual	239.7	-1.5%	24.78	0.7%	5,938	-0.7%
Q1 2018	57.8	-1.5%	25.51	0.7%	1,475	-0.8%
Q2 2018	58.8	-1.3%	25.10	0.9%	1,475	-0.4%
Q3 2018	59.8	-0.9%	24.66	0.9%	1,476	0.0%
Q4 2018	61.7	1.0%	24.60	0.6%	1,517	1.6%
Annual	238.1	-0.7%	24.97	0.8%	5,943	0.1%



UB BONELESS-SKINLESS TURKEY BREAST, TOM, FRESH

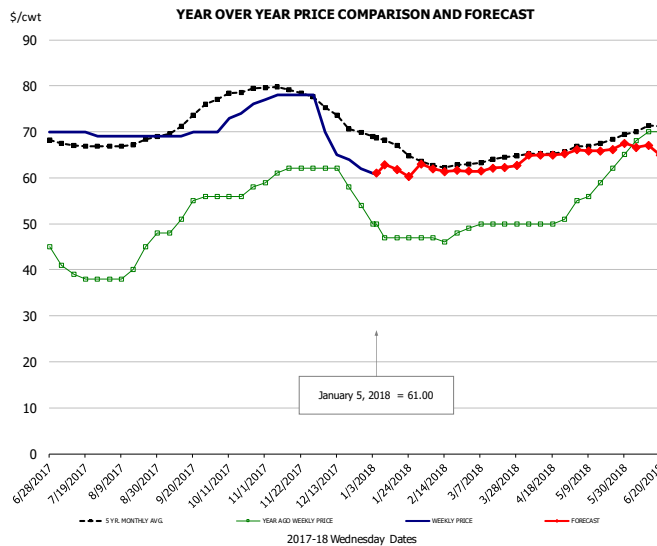


PRICE HISTORY AND FORECAST

- DOLLARS PER CWT -

	5-YR. AVG	YR. AGO	CURRENT	FORECAST	% CH.
Jul	296.56	215.00	153.00		-28.8%
Aug	317.03	215.00	153.00		-28.8%
Sep	326.40	215.00	153.00		-28.8%
Oct	328.29	215.00	155.00		-27.9%
Nov	321.34	201.20	155.00		-23.0%
Dec	309.00	168.00	155.00		-7.7%
27-Dec		165.00	155.00		-6.1%
5-Jan		165.00	155.00		-6.1%
17-Jan		165.00		153.72	-6.8%
Jan	290.07	165.00		155.00	-6.1%
Feb	247.05	160.25		155.00	-3.3%
Mar	234.65	155.00		160.00	3.2%
Apr	240.44	153.50		170.00	10.7%
May	251.25	153.00		180.00	17.6%
Jun	268.20	153.00		190.00	24.2%

UB DRUMS, EAST, TOM, FROZEN

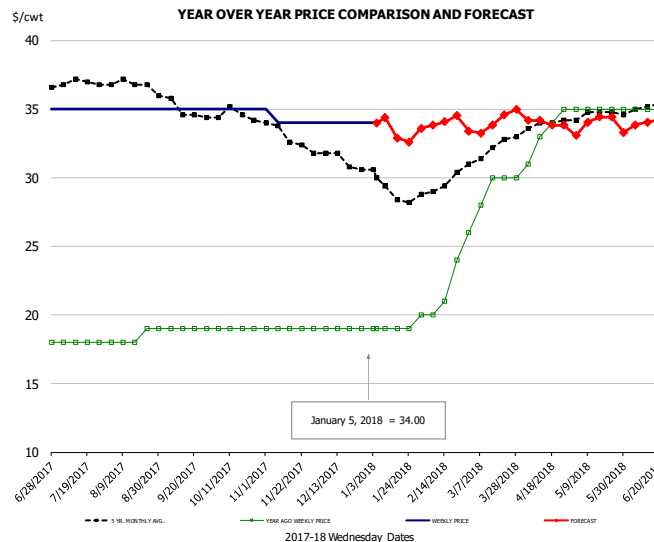


PRICE HISTORY AND FORECAST

- DOLLARS PER CWT -

	5-YR. AVG	YR. AGO	CURRENT	FORECAST	% CH.
Jul	67.00	39.00	69.75		78.8%
Aug	67.61	41.80	69.00		65.1%
Sep	71.25	52.50	69.50		32.4%
Oct	77.90	56.50	73.25		29.6%
Nov	79.29	61.20	77.80		27.1%
Dec	73.33	59.00	65.25		10.6%
27-Dec		54.00	62.00		14.8%
5-Jan		50.00	61.00		22.0%
17-Jan		47.00		61.84	31.6%
Jan	67.30	47.75		62.00	29.8%
Feb	62.80	47.00		62.00	31.9%
Mar	63.70	49.80		62.00	24.5%
Apr	65.33	50.25		65.00	29.4%
May	67.56	59.40		66.00	11.1%
Jun	70.44	69.50		66.00	-5.0%

MECH. SEP. TURKEY-FRESH-UNDER 20% FAT, SOME SKIN

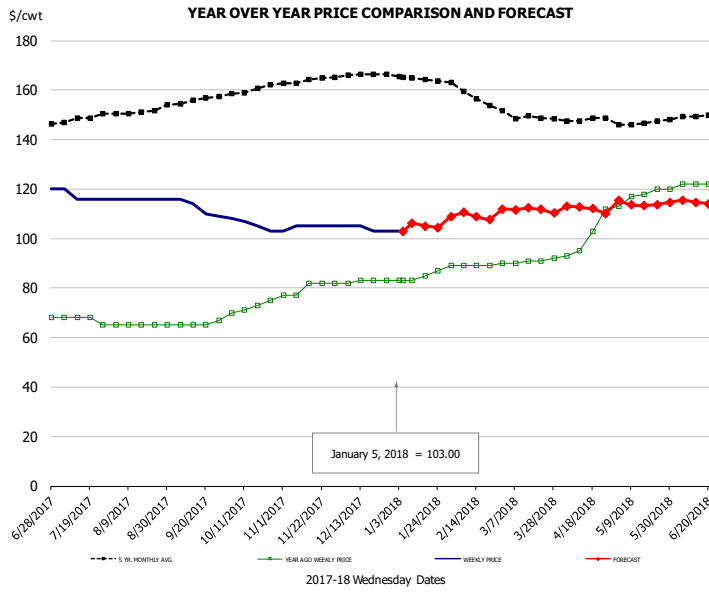


PRICE HISTORY AND FORECAST

- DOLLARS PER CWT -

	5-YR. AVG	YR. AGO	CURRENT	FORECAST	% CH.
Jul	36.96	18.00	35.00		94.4%
Aug	36.93	18.40	35.00		90.2%
Sep	35.20	19.00	35.00		84.2%
Oct	34.49	19.00	35.00		84.2%
Nov	33.20	19.00	34.20		80.0%
Dec	31.36	19.00	34.00		78.9%
27-Dec		19.00	34.00		78.9%
5-Jan		19.00	34.00		78.9%
17-Jan		19.00		32.90	73.1%
Jan	29.15	19.00		34.00	78.9%
Feb	29.40	21.25		34.00	60.0%
Mar	31.99	28.80		34.00	18.1%
Apr	33.86	33.25		34.00	2.3%
May	34.65	35.00		34.00	-2.9%
Jun	35.05	35.00		34.00	-2.9%

TURKEY MEAT - SCAPULA, FROZEN

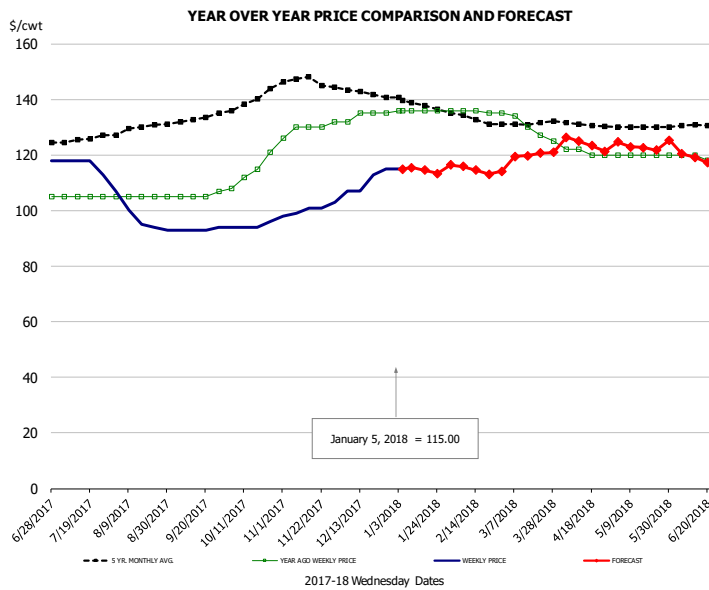


PRICE HISTORY AND FORECAST

- DOLLARS PER CWT -

	5-YR. AVG	YR. AGO	CURRENT	FORECAST	% CH.
Jul	148.17	67.25	117.00		74.0%
Aug	150.95	65.00	116.00		78.5%
Sep	155.53	65.50	112.25		71.4%
Oct	159.91	72.25	105.75		46.4%
Nov	163.80	80.00	104.60		30.8%
Dec	166.07	82.75	104.00		25.7%
27-Dec		83.00	103.00		24.1%
5-Jan		83.00	103.00		24.1%
17-Jan		85.00		105.11	23.7%
Jan	164.75	84.50		106.00	25.4%
Feb	158.20	89.00		110.00	23.6%
Mar	148.76	90.80		112.00	23.3%
Apr	147.41	100.75		112.00	11.2%
May	146.58	117.60		114.00	-3.1%
Jun	148.98	121.50		115.00	-5.3%

UB TURKEY MEAT - THIGH, FRESH



PRICE HISTORY AND FORECAST

- DOLLARS PER CWT -

	5-YR. AVG	YR. AGO	CURRENT	FORECAST	% CH.
Jul	125.08	105.00	116.75		11.2%
Aug	129.01	105.00	97.80		-6.9%
Sep	132.35	105.50	93.25		-11.6%
Oct	138.96	114.00	94.50		-17.1%
Nov	146.87	129.60	100.40		-22.5%
Dec	142.77	134.25	110.50		-17.7%
27-Dec		135.00	115.00		-14.8%
5-Jan		136.00	115.00		-15.4%
17-Jan		136.00		114.60	-15.7%
Jan	138.32	136.00		115.00	-15.4%
Feb	133.30	135.75		115.00	-15.3%
Mar	130.89	130.20		120.00	-7.8%
Apr	131.10	121.00		124.00	2.5%
May	130.04	120.00		123.00	2.5%
Jun	130.40	119.00		119.00	0.0%

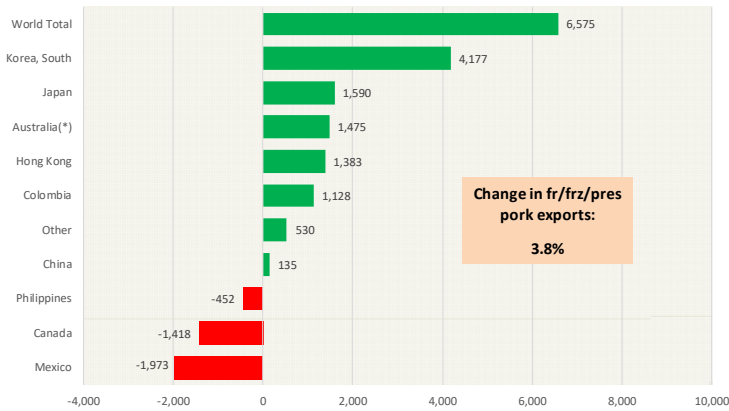


Special Monthly Update - Pork Exports

Y/Y Ch. in Nov. 17 vs. Nov 16 US Fr, Froz & Pres Pork Export Volume

Source: USDA/FAS

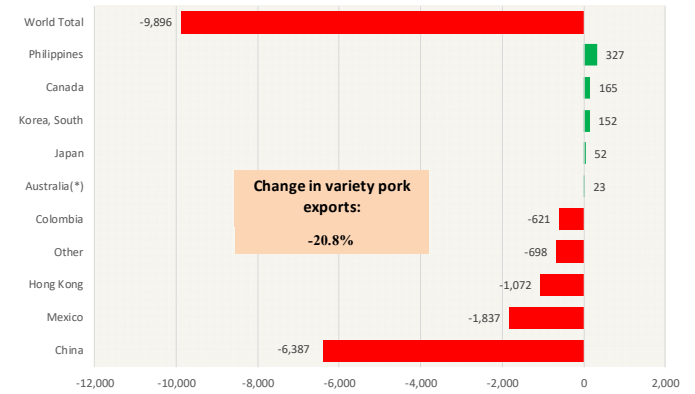
Units: Metric Tons



Y/Y Ch. in Nov. 17 vs. Nov 16 US Pork Variety Meat Exports

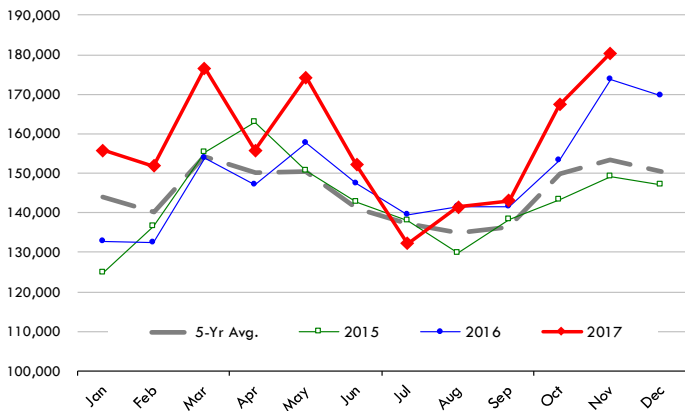
Source: USDA/FAS

Units: Metric Tons



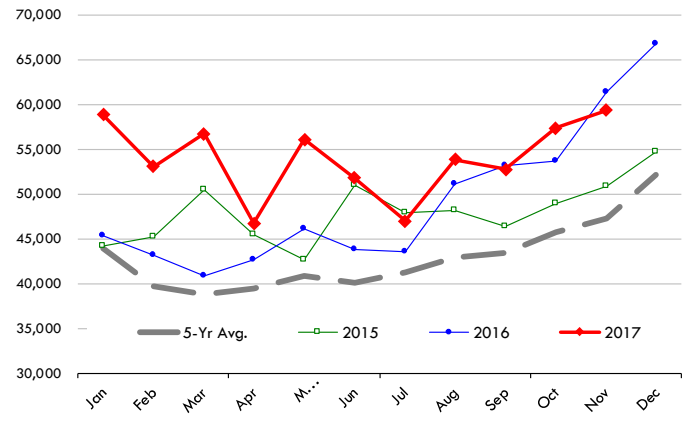
Quantity of US Exports of Fr/Frz/Cooked Pork: World Total

Source: USDA/FAS. Units: Metric Ton. Analysis by: Steiner Consulting (800.526.4612)



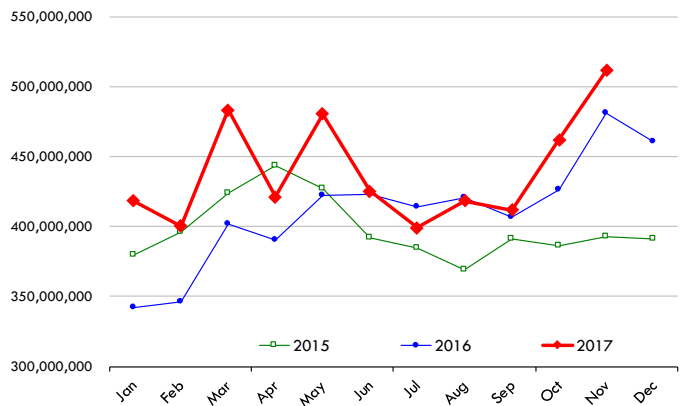
Quantity of US Exports of Fr/Frz/Cooked Pork: Mexico

Source: USDA/FAS. Units: Metric Ton. Analysis by: Steiner Consulting (800.526.4612)



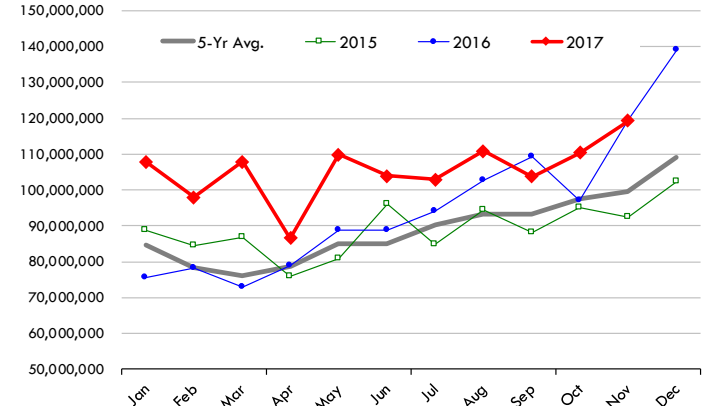
\$ Value of US Exports of Fr/Frz/Cooked Pork: World Total

Source: USDA/FAS. Units: US Dollars. Analysis by: Steiner Consulting (800.526.4612)



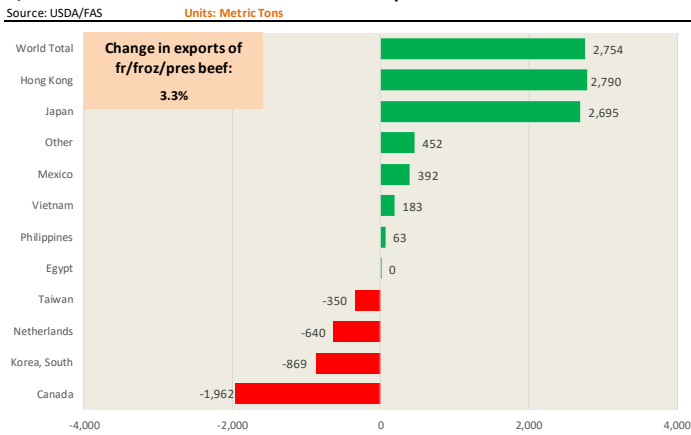
\$ Value of US Exports of Fr/Frz/Cooked Pork: Mexico

Source: USDA/FAS. Units: US Dollars. Analysis by: Steiner Consulting (800.526.4612)

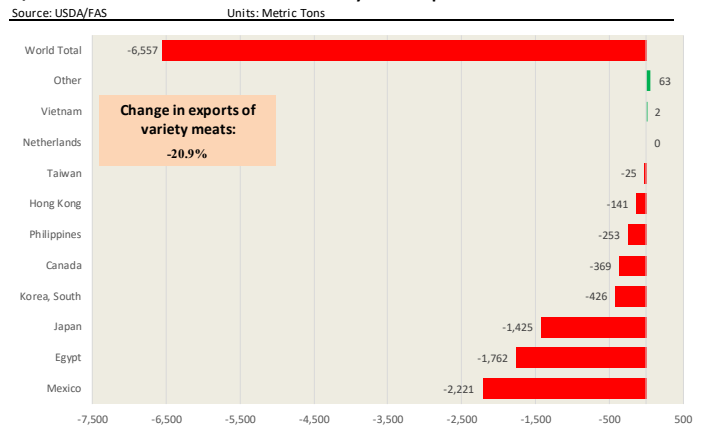


Special Monthly Update - Beef Exports

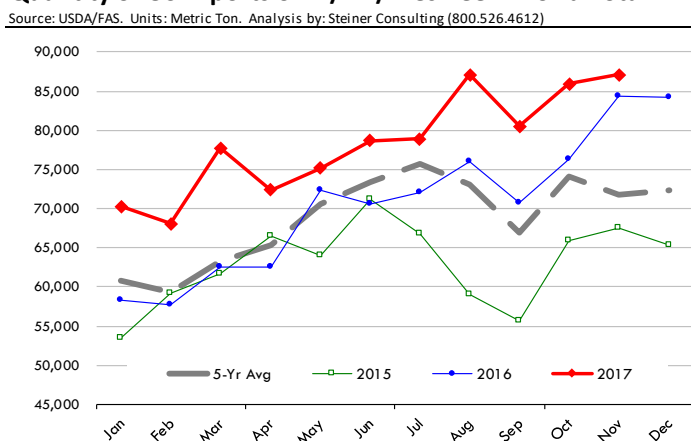
Y/Y Ch. in Nov. 17 vs. Nov 16 US Beef and Veal Export Volume



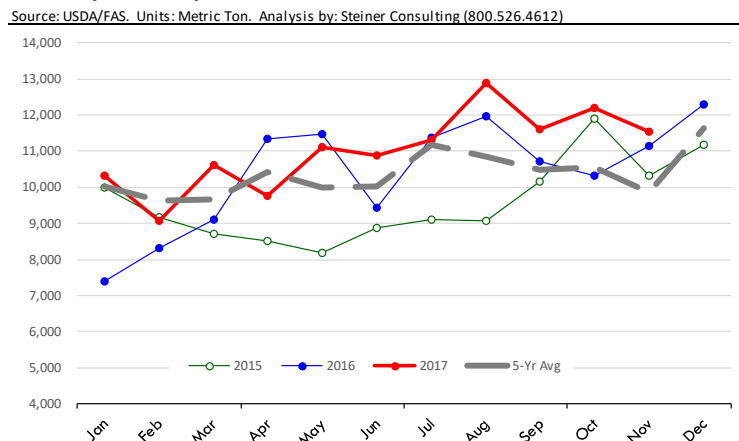
Y/Y Ch. in Nov. 17 vs. Nov 16 US Beef Variety Meat Exports



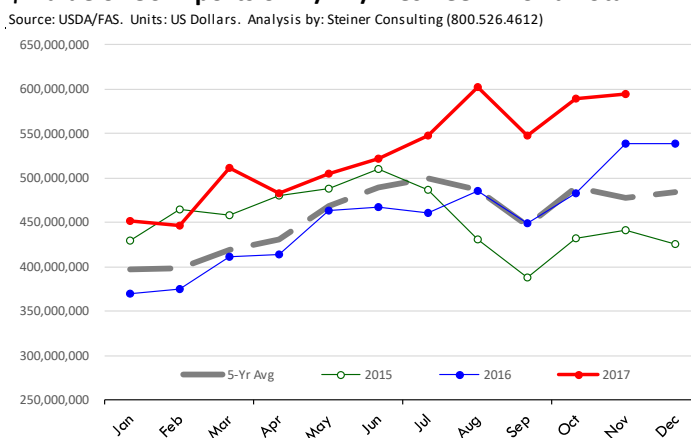
Quantity of US Exports of Fr/Frz/Pres Beef: World Total



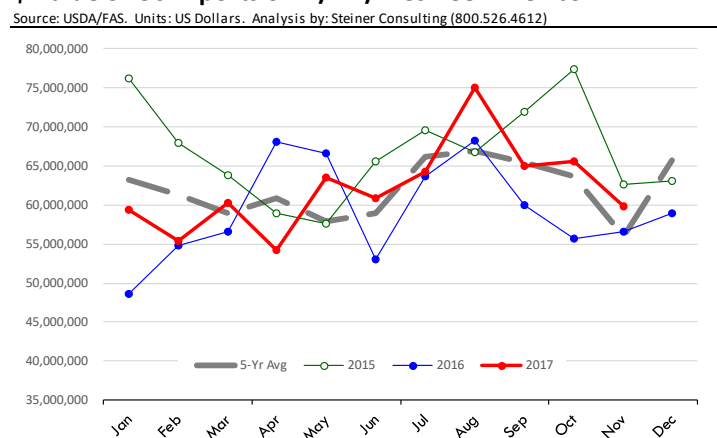
Quantity of US Exports of Fr/Frz/Pres Beef: Mexico



\$ Value of US Exports of Fr/Frz/Pres Beef: World Total



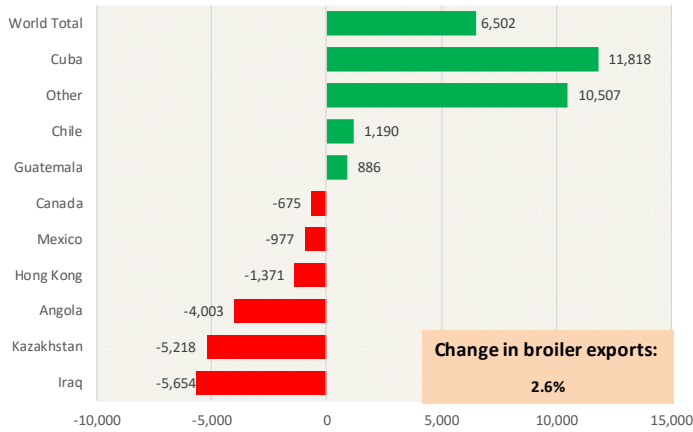
\$ Value of US Exports of Fr/Frz/Pres Beef: Mexico



Special Monthly Update - Chicken Exports

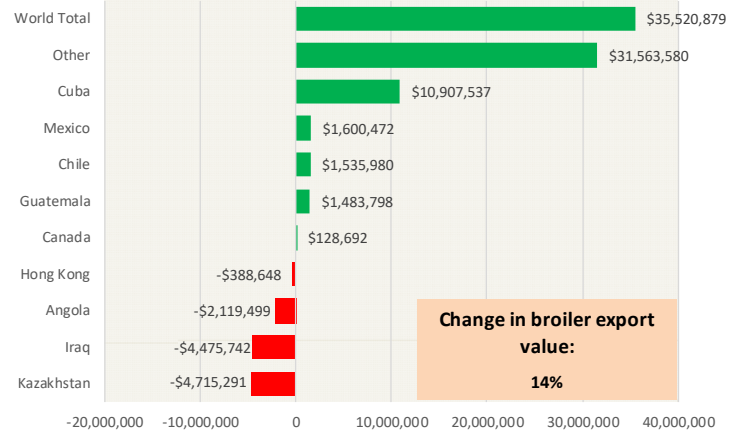
Y/Y Ch. in Nov. 17 vs. Nov 16 US Fresh/Frozen Broiler Meat Exports

Source: USDA/FAS Units: Metric Tons



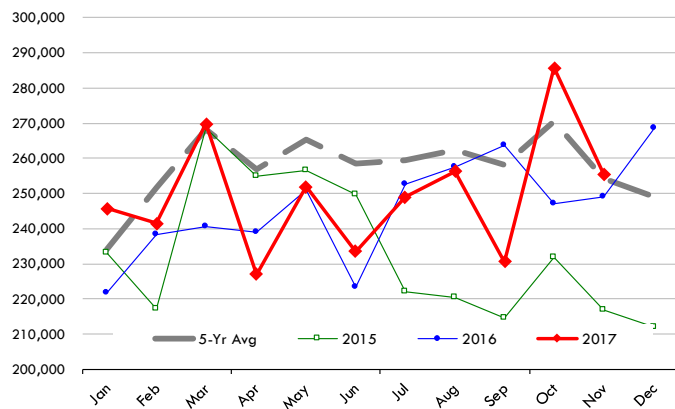
Y/Y Ch. in Nov. 17 vs. Nov 16 US Broiler Export Value (\$)

Source: USDA/FAS Units: US \$



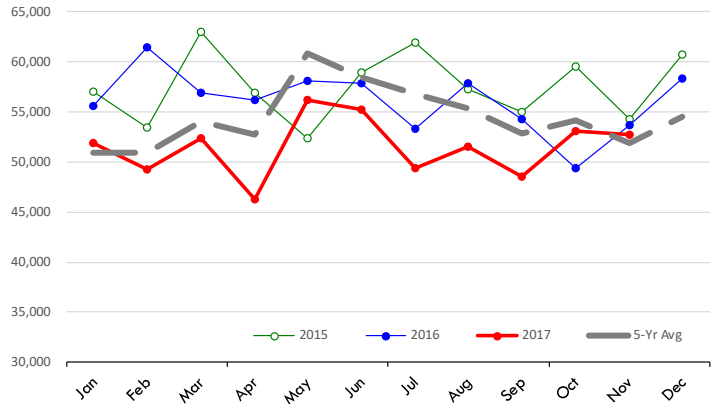
Quantity of US Exports of Fr/Frz Chicken: World Total

Source: USDA/FAS. Units: Metric Ton. Analysis by: Steiner Consulting (800.526.4612)



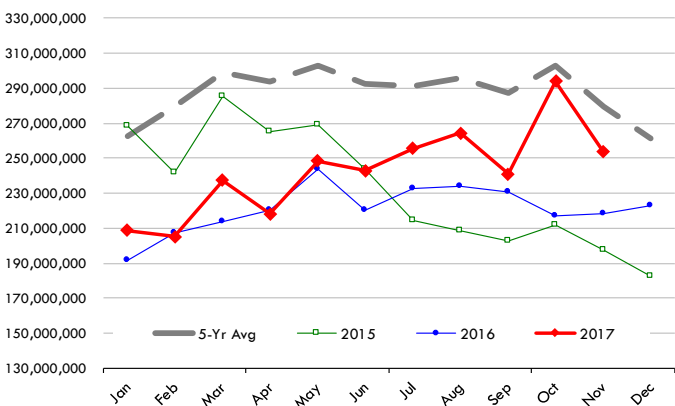
Quantity of US Exports of Fr/Frz Chicken: Mexico

Source: USDA/FAS. Units: Metric Ton. Analysis by: Steiner Consulting (800.526.4612)



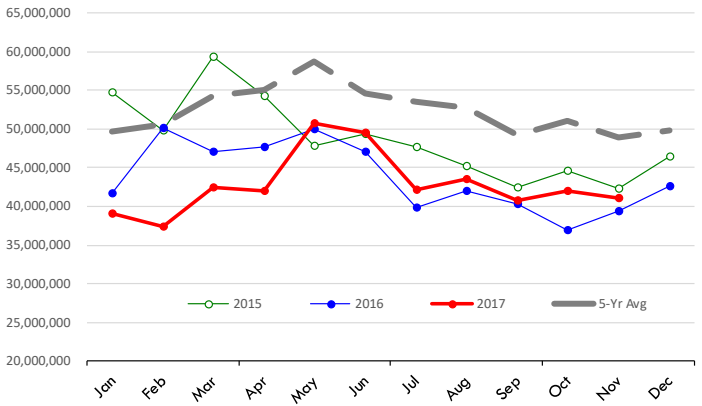
\$ Value of US Exports of Fr/Frz Chicken: World Total

Source: USDA/FAS. Units: US Dollar. Analysis by: Steiner Consulting (800.526.4612)



\$ Value of US Exports of Fr/Frz Chicken: Mexico

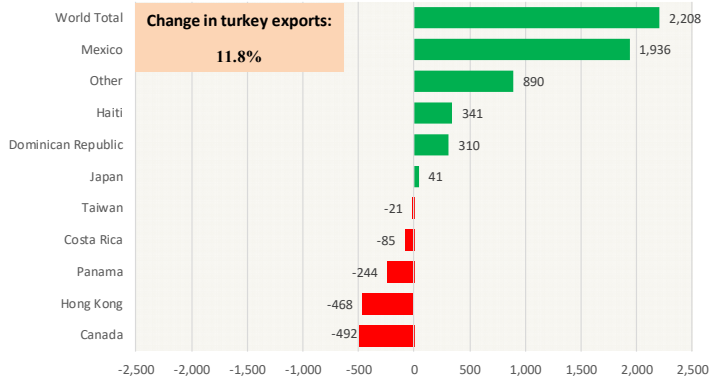
Source: USDA/FAS. Units: US Dollar. Analysis by: Steiner Consulting (800.526.4612)



Special Monthly Update - Turkey Exports

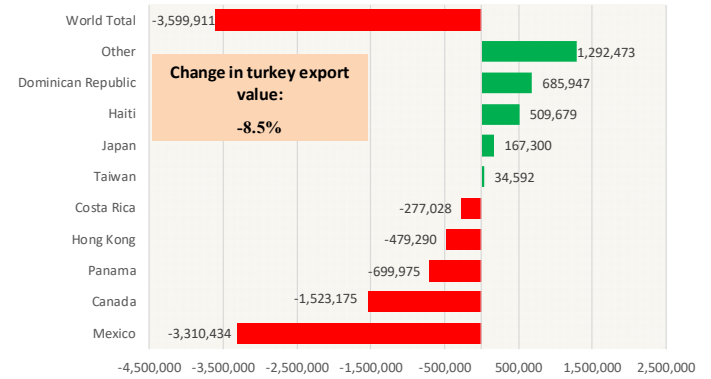
Y/Y Ch. in Nov. 17 vs. Nov 16 US Turkey Exports

Source: USDA/FAS Units: Metric Tons



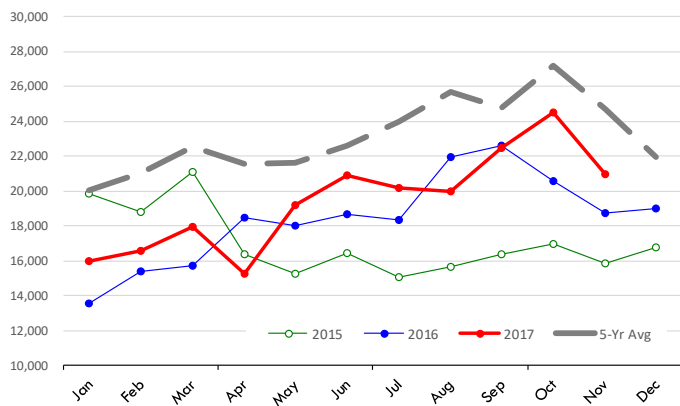
Y/Y Ch. in Nov. 17 vs. Nov 16 US Turkey Export Value (\$)

Source: USDA/FAS Units: US Dollars



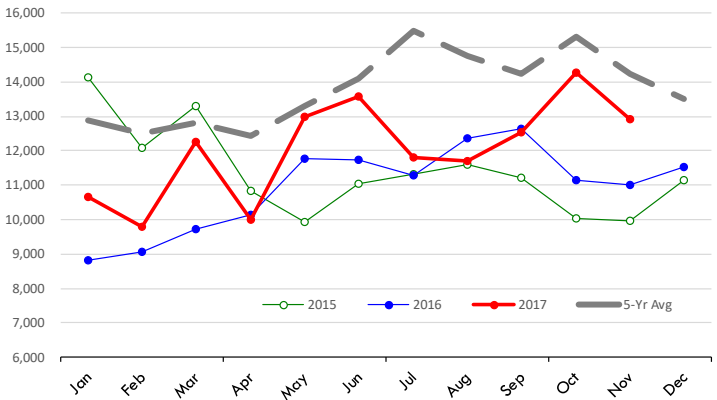
Quantity of US Exports of Fr/Frz Turkey: World Total

Source: USDA/FAS. Units: Metric Ton. Analysis by: Steiner Consulting (800.526.4612)



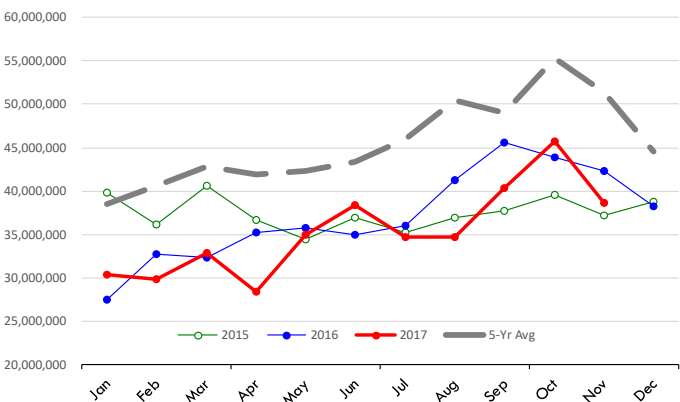
Quantity of US Exports of Fr/Frz Turkey: Mexico

Source: USDA/FAS. Units: Metric Ton. Analysis by: Steiner Consulting (800.526.4612)



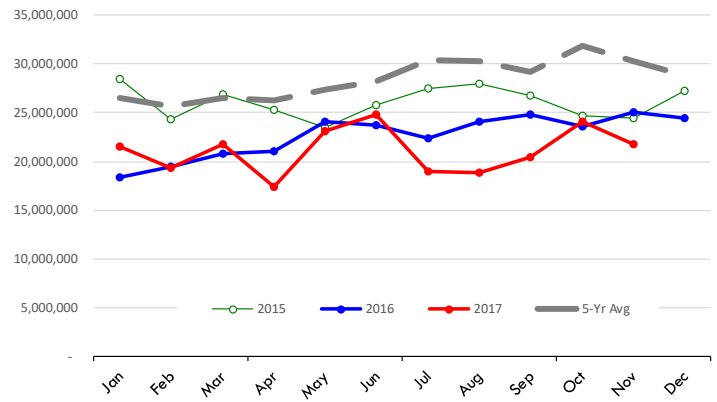
\$ Value of US Exports of Fr/Frz Turkey Export Value: World To

Source: USDA/FAS. Units: US Dollars. Analysis by: Steiner Consulting (800.526.4612)



\$ Value of US Exports of Fr/Frz Turkey: Mexico

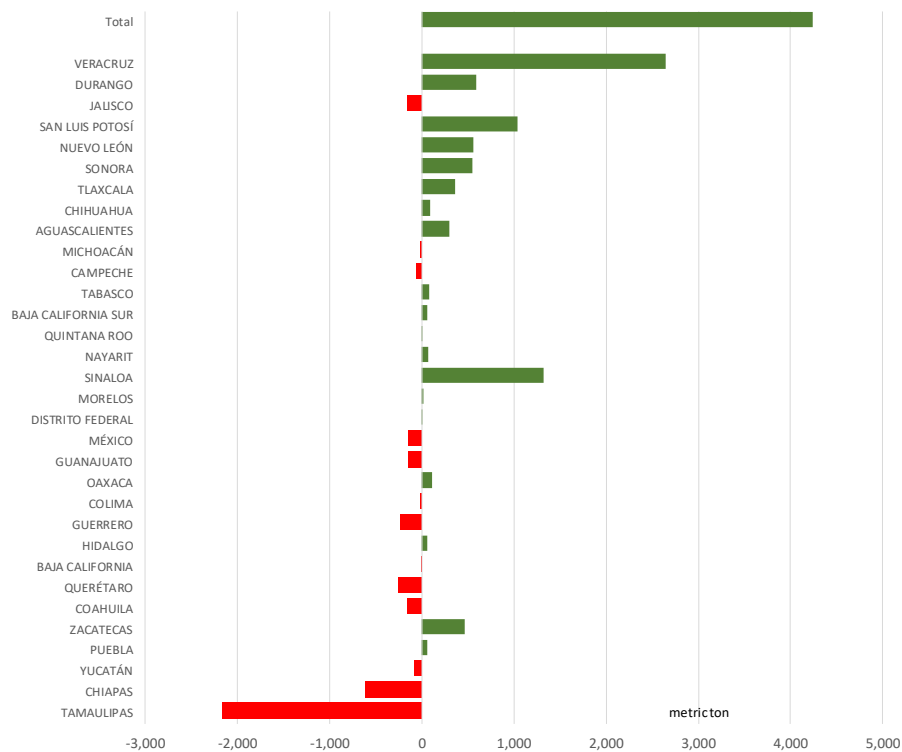
Source: USDA/FAS. Units: US Dollars. Analysis by: Steiner Consulting (800.526.4612)



Mexico Beef Production

CONTRIBUTION TO YEAR/YEAR CHANGE IN MEXICO BEEF PRODUCTION

METRIC TON. November 2017 VS. November 2016



Mexico Pork Prices

PRECIO PROMEDIO SEMANAL EN OBRADOR

(\$/kg)

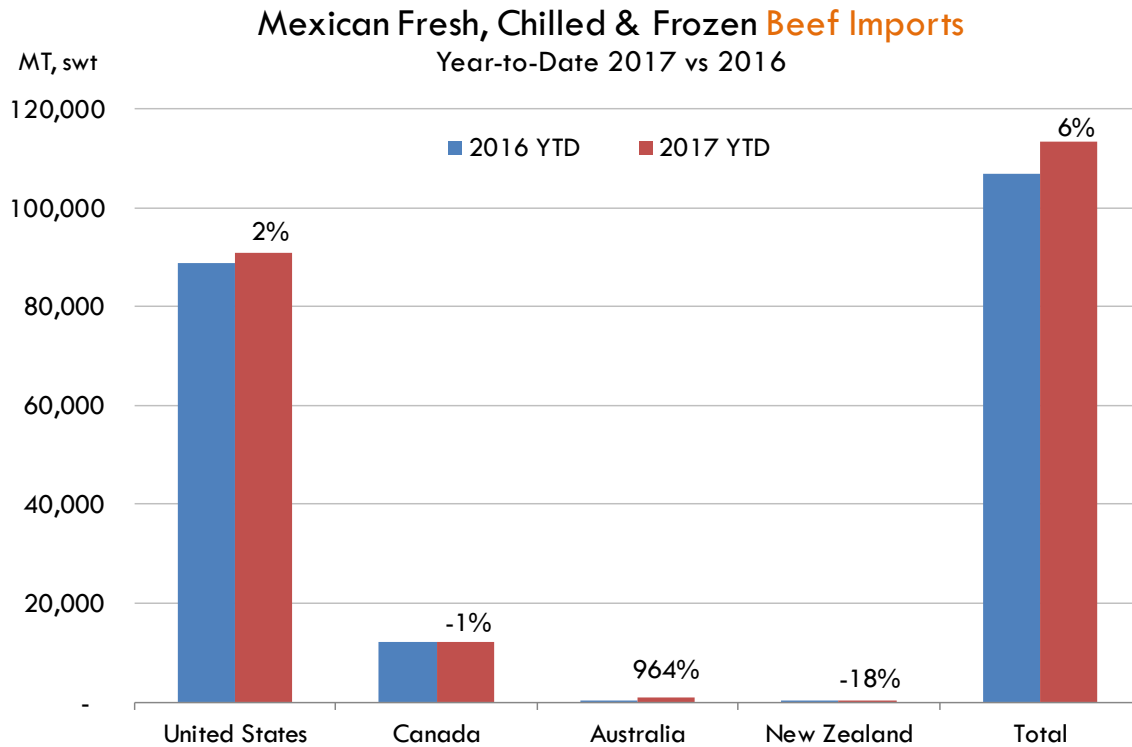
Semana 52 del 25-29 de diciembre

	Ultimo	Anterior	Cambio
Supremo LAB Rastro	32.38	30.78	1.60
Carne en canal	46.50	46.50	0.00
Cabeza	26.50	26.00	0.50
Espaldilla	54.00	53.50	0.50
Pecho	64.00	64.00	0.00
Entrecot	60.50	60.50	0.00
Tocino	59.50	59.50	0.00
Pierna	64.50	62.50	2.00
Cuero	30.00	29.50	0.50

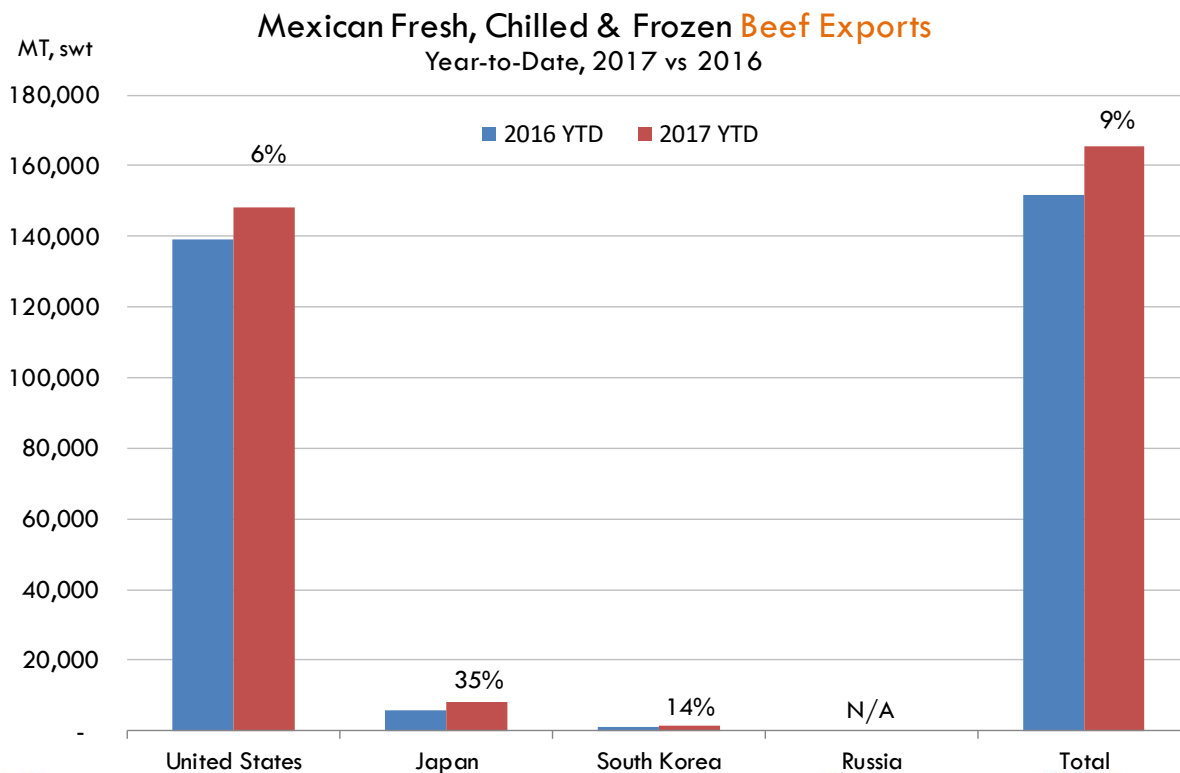
Fuente: SNIIM



Mexico Beef Imports

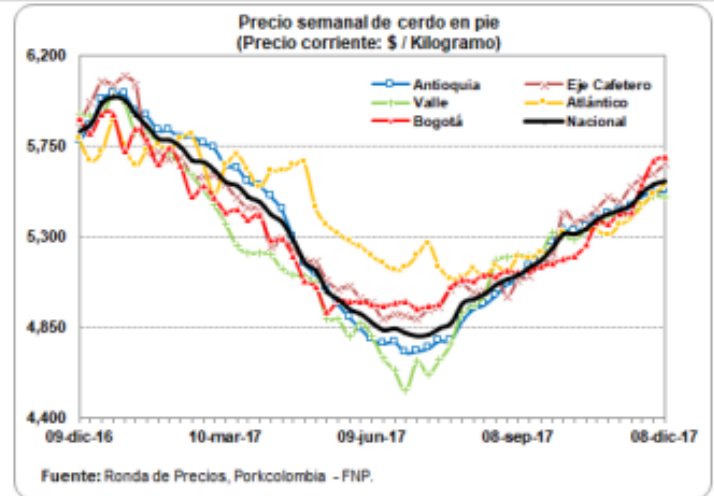


Mexico Beef Exports



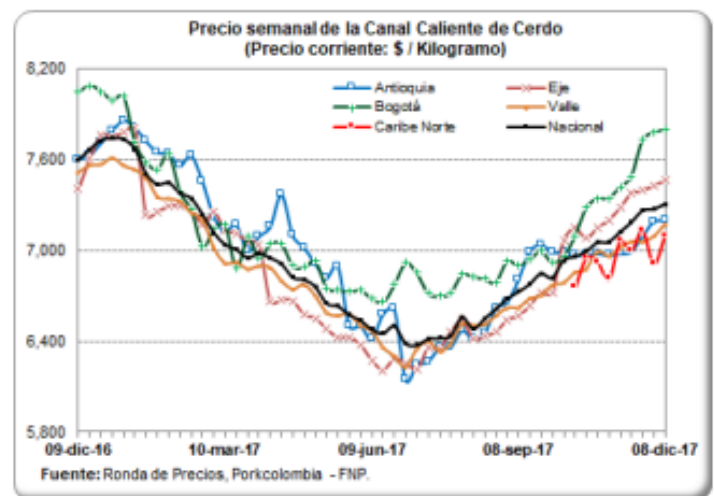
PRECIO SEMANAL DEL CERDO EN PIE (\$ / Kilogramo)

Ronda	Semana	Antioquia	Eje Cafetero	Valle	Caribe Norte	Bogotá	Nacional
37	15-sep-17	5,150	5,103	5,205	5,191	5,132	5,148
38	22-sep-17	5,187	5,174	5,217	5,221	5,152	5,181
39	29-sep-17	5,267	5,191	5,317	5,231	5,168	5,243
40	06-oct-17	5,333	5,418	5,304	5,320	5,190	5,312
41	13-oct-17	5,327	5,375	5,288	5,306	5,206	5,311
42	20-oct-17	5,351	5,395	5,326	5,330	5,261	5,339
43	27-oct-17	5,386	5,440	5,348	5,331	5,375	5,386
44	03-nov-17	5,413	5,493	5,398	5,306	5,365	5,412
45	10-nov-17	5,430	5,472	5,401	5,358	5,418	5,431
46	17-nov-17	5,448	5,548	5,411	5,388	5,425	5,457
47	24-nov-17	5,503	5,590	5,457	5,457	5,562	5,521
48	01-dic-17	5,518	5,613	5,502	5,512	5,676	5,559
49	08-dic-17	5,528	5,660	5,498	5,550	5,696	5,575



PRECIO SEMANAL DE LA CANAL CALIENTE DE CERDO (\$ / Kilogramo)














Ronda	Semana	Antioquia	Eje	Bogotá	Valle	Caribe Norte	Nacional
37	15-sep-17	6,992	6,631	6,943	6,678	-	6,778
38	22-sep-17	7,040	6,722	6,995	6,700	-	6,849
39	29-sep-17	6,987	6,718	6,924	6,769	-	6,820
40	06-oct-17	6,992	7,062	6,962	6,783	-	6,935
41	13-oct-17	6,966	7,149	7,094	6,850	6,756	6,960
42	20-oct-17	6,969	7,079	7,280	6,876	6,953	6,993
43	27-oct-17	6,979	7,150	7,345	6,991	6,922	7,052
44	03-nov-17	6,967	7,200	7,344	6,962	6,813	7,056
45	10-nov-17	6,979	7,281	7,422	7,013	7,061	7,121
46	17-nov-17	6,994	7,376	7,489	7,057	6,996	7,184
47	24-nov-17	7,093	7,395	7,729	7,058	7,133	7,262
48	01-dic-17	7,191	7,430	7,779	7,091	6,910	7,271
49	08-dic-17	7,196	7,463	7,799	7,172	7,095	7,307



Global Pork Pricing Trends

World Hog Prices, Various Styles, Dressed Wt. & Live Wt.

Prices in US\$ Equivalent

			This Week	Prev. Wk.	Year Ago		
			29-Dec-17	22-Dec-17	30-Dec-16	% ch.	
	US Lean Hog Carcass, IA/MN, (US\$/kg)	carcass wt.	1.26	1.22	1.14	↑	11%
	CAN Hog Carcass (US\$/kg)	carcass wt.	1.15	1.13	1.05	↑	9%
	AUS BAC Carcass 80-95kg (US\$/kg)	carcass wt.	3.54	3.50	3.91	↓	-9%
	EU-28 Slaughter Pigs, 70-87 kg, (US\$/kg)	carcass wt.	1.70	1.69	1.57	↑	8%
	Denmark Slaughter Pigs, 70-87 kg, (US\$/kg)	carcass wt.	1.56	1.56	1.50	↑	4%
	Germany Slaughter Pigs, 70-87 kg, (US\$/kg)	carcass wt.	1.76	1.74	1.62	↑	9%
	Spain Slaughter Pigs, 70-87 kg, (US\$/kg)	carcass wt.	1.50	1.52	1.46	↑	3%
	France Slaughter Pigs, 70-87 kg, (US\$/kg)	carcass wt.	1.55	1.53	1.49	↑	4%
	Argentina Live Hogs, (US\$/kg)	liveweight	1.18	1.19	1.17	↑	1%
	Brazil Live Hogs, (US\$/kg)	liveweight	1.15	1.14	1.23	↓	-7%
	Chile Live Hogs, (US\$/kg)	liveweight	1.66	1.64	1.55	↑	7%
	Mexico Live Pigs, (US\$/kg)	liveweight	1.47	1.38	1.54	↓	-5%
	China Hog Carcass, (US\$/kg)	carcass wt.	3.34	3.32	3.45	↓	-3%



Miami, USA

2800 Biscayne Blvd. Suite 500
Miami, FL 33137
Tel: + 1 305 290 3720
Fax: +1 313 486 6784
E-mail: info@andesgt.com

Monterrey, Mexico

Av. Ignacio Morones Prieto 2805,
Of. 209 y 210, CP 64710
Monterrey, Nuevo Leon
Tel: +52 55 6264 1111
E-mail: info@andesgt.com

Company Summary

www.andesgt.com
Quality | Integrity | Trust

Colombia

Teléfono: +57 (1) 382 6784

